



BRIGHT IS ONLY THE BEGINNING

INSTALL GUIDE

DRIFT LIGHT BRACKETS: MUSTANG S650 (23+)

BAF252

WHAT'S INCLUDED



2X (PAIR) DRIFT
LIGHT BRACKETS



2X WIRE CLIPS



REQUIRED TOOLS

- RACHET
- 10MM SOCKET
- ZIP TIES
- 17MM WRENCH
- T20 TORX BIT
- PAINTER'S TAPE
- MARKER

WARNING: IT IS THE INSTALLERS RESPONSIBILITY TO CONFIRM COMPLIANCE WITH STATE AND LOCAL LAWS. BY READING THIS DOCUMENT, YOU AGREE IT IS ONLY TO BE USED AS AN EDUCATIONAL GUIDE. MORIMOTO LIGHTING NOR ITS DEALERS MAKE GUARANTEES ON ANY FINISHED RESULTS, NOR ARE THEY TO BE HELD RESPONSIBLE FOR ANY DAMAGE, MISUSE, OR PERSONAL INJURIES. IF YOU ARE UNABLE TO CLEARLY UNDERSTAND AND ADAPT THE INFORMATION BELOW, PROFESSIONAL INSTALLATION IS RECOMMENDED.



BRACKET INSTALLATION

1. BEGIN BY INSERTING ONE OF THE PLASTIC WIRE CLIPS INTO THE SQUARE SLOT ON EACH BRACKET, AS SHOWN BELOW

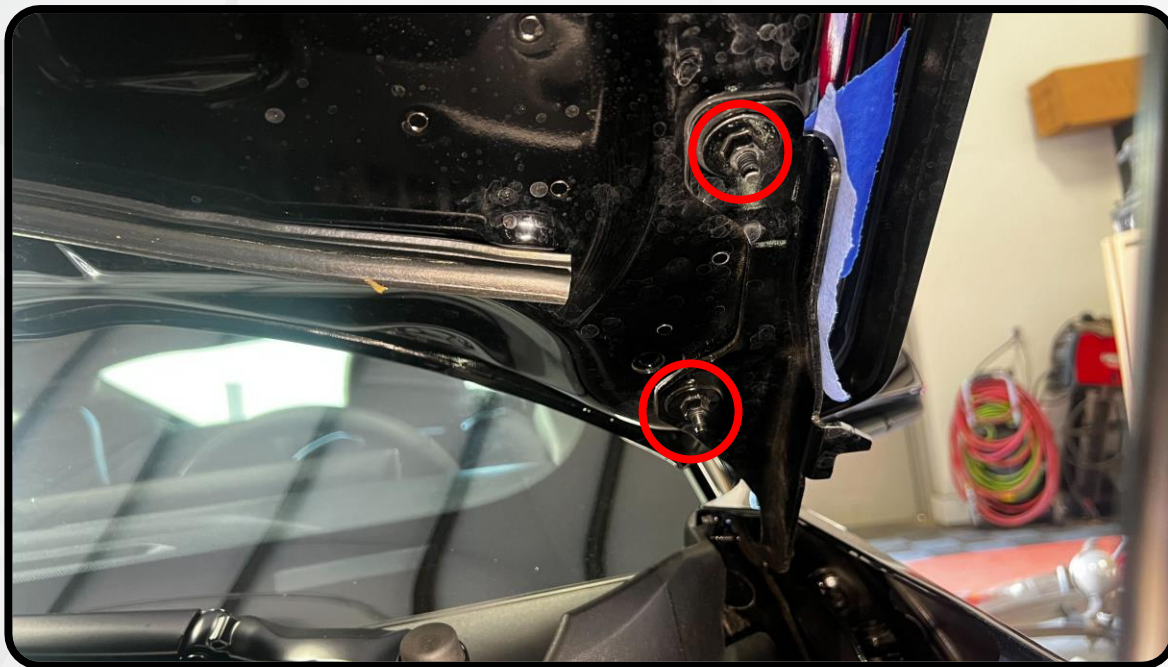


2. MOVING TO THE VEHICLE, RAISE THE HOOD AND LOCATE THE HOOD HINGE
3. APPLY A STRIP OF PAINTER'S TAPE TO THE HOOD ALONG SIDE THE HOOD HINGE, AND A SECOND STRIP NEXT TO IT ON THE HOOD HINGE ITSELF
4. DRAW A STRAIGHT LINE ON THE TAPE ACROSS THE SEAM BETWEEN THE HINGE AND THE HOOD ITSELF. THIS WILL BE USED TO ENSURE THE HOOD REMAINS IN ITS ORIGINAL POSITION AFTER THE INSTALL
5. REPEAT THIS PROCESS ON THE HINGE ON THE OPPOSITE SIDE

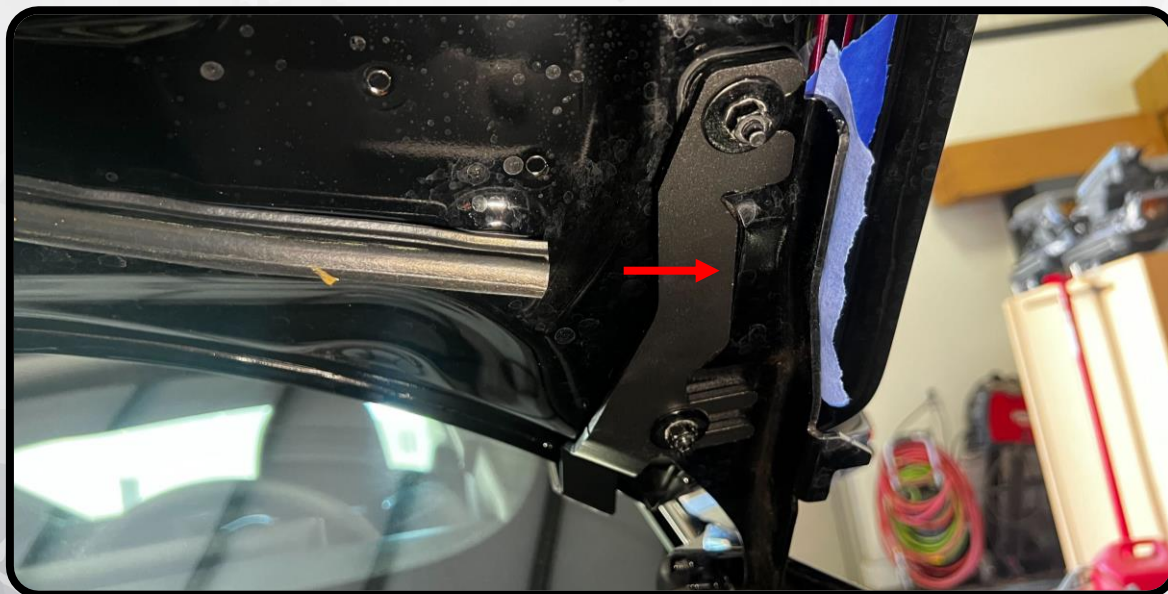


BRACKET INSTALLATION

6. LOCATE THE TWO 10MM NUTS THAT SECURE THE HOOD TO THE HOOD HINGE AND LOOSEN THEM UNTIL YOU HAVE ENOUGH SPACE TO SLIDE THE BRACKET IN BETWEEN THE HINGE AND THE NUT/WASHER



7. SLIDE THE BRACKET BETWEEN THE HINGE AND NUT/WASHER AND RETIGHTEN THE NUTS UNTIL HAND TIGHT. USE THE MARKINGS YOU MADE EARLIER TO CONFIRM THE HOOD REMAINS ALIGNED AS YOU RETIGHTEN IT



BRACKET INSTALLATION

8. TO INSTALL YOUR POD LIGHTS, CLOSE THE HOOD AND PLACE THE U-BRACKET ON THE DITCH LIGHT BRACKET. SECURE IT TO THE BRACKET USING THE CARRIAGE BOLT AND 17MM NUT. HOLD THE TOP OF THE BOLT DOWN WITH YOUR HAND AND TIGHTEN THE NUT WITH A 17MM WRENCH. LEAVE IT SLIGHTLY LOOSE SO THAT THE POD CAN BE AIMED LATER



9. SECURE THE POD TO THE U-BRACKET WITH THE FOUR PROVIDED SCREWS USING A T20 TORX BIT. LEAVE THESE SLIGHTLY LOOSE AS WELL TO ALLOW AIMING LATER



10. REPEAT STEPS 6-9 ON THE OPPOSITE SIDE OF THE VEHICLE

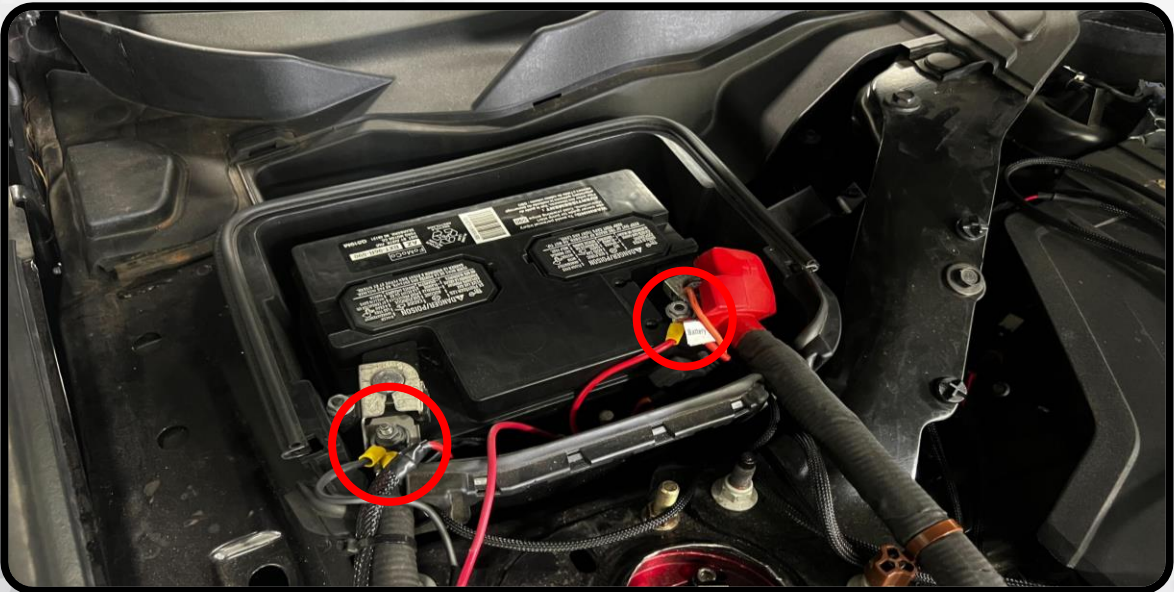


WIRE HARNESS INSTALLATION

11. FIND A SUITABLE LOCATION IN YOUR ENGINE BAY NEAR THE BATTERY AND SECURE THE RELAY ON YOUR RELAY HARNESS. MAKE SURE THE RELAY IS IN THE UPRIGHT POSITION, WITH THE WIRES COMING OUT OF THE BOTTOM OF THE RELAY. FOR THIS INSTALL, WE ENLARGED THE HOLE ON THE RELAY TO 5/16" AND MOUNTED IT TO ONE OF THE PUSH-TABS NEXT TO THE BATTERY TRAY

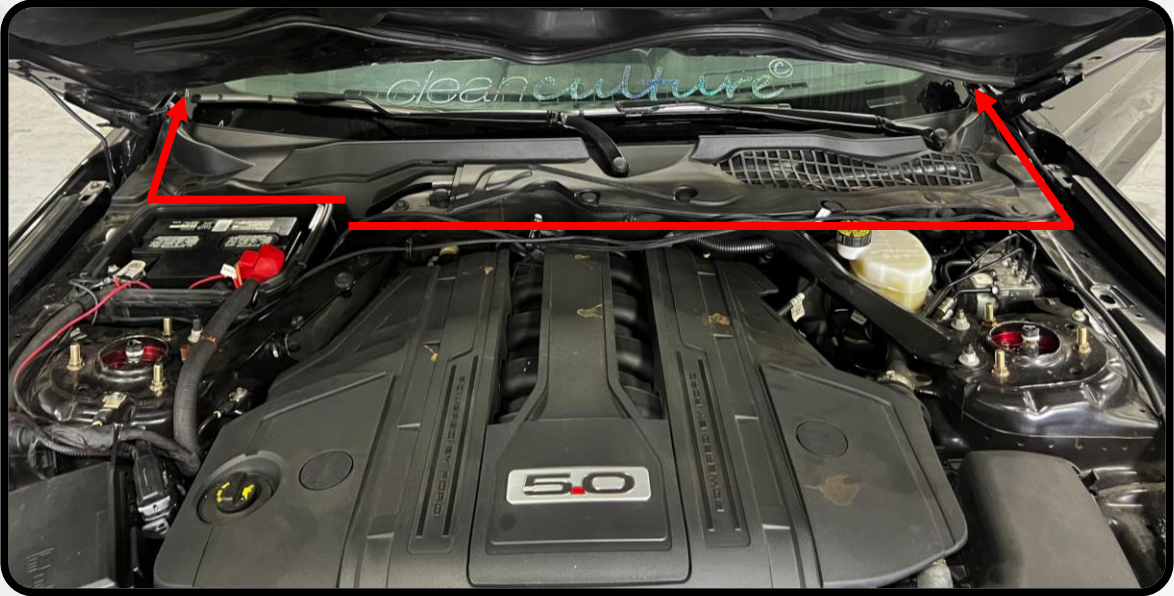


12. ROUTE THE RED RING TERMINAL LABELED "BATTERY +" TO THE POSITIVE BATTERY TERMINAL ON THE BATTERY, AND THE BLACK RING TERMINAL LABELED "GROUND -" TO THE NEGATIVE TERMINAL ON THE BATTERY OR SUITABLE GROUND ON THE CHASSIS



WIRE HARNESS INSTALLATION

13. ROUTE THE "LIGHT 1" AND "LIGHT 2" CONNECTORS TO EACH OF THE POD LIGHTS. YOU WILL NEED TO INSTALL THE INCLUDED EXTENSIONS ONTO THE HARNESS TO REACH THE DRIVER'S-SIDE POD

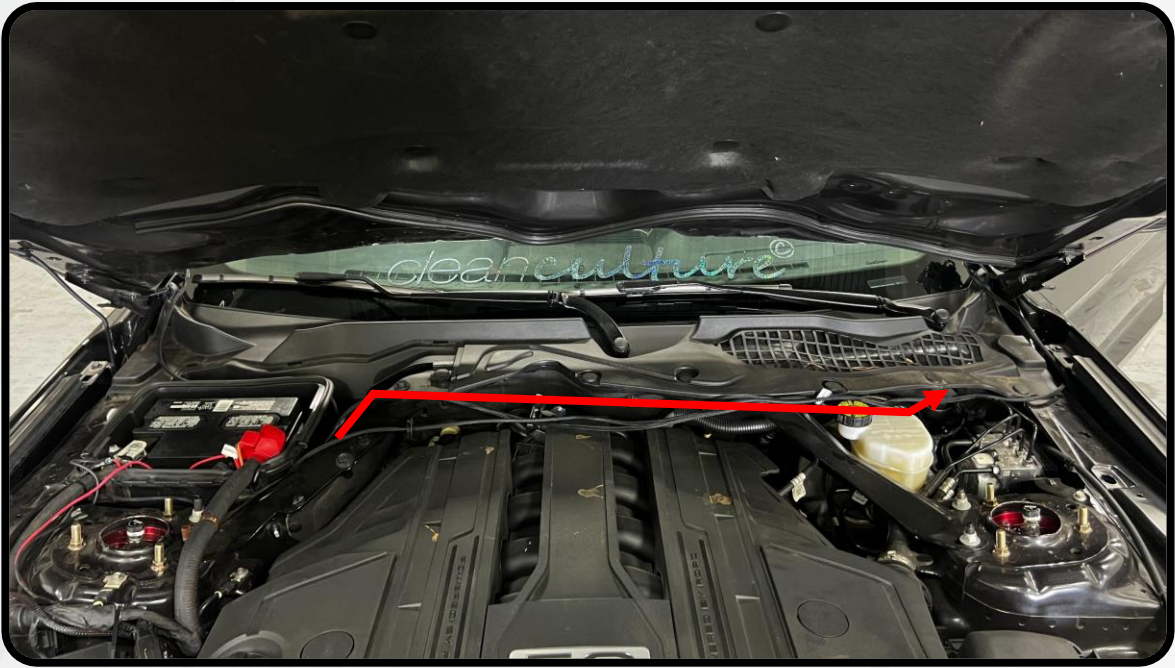


14. CONNECT THE HARNESS TO EACH POD. INSERT THE CONNECTOR UNTIL IT CLICKS INTO PLACE. SECURE THE HARNESS TO THE BRACKET USING THE WIRE CLIPS ON THE BRACKET BEHIND THE POD

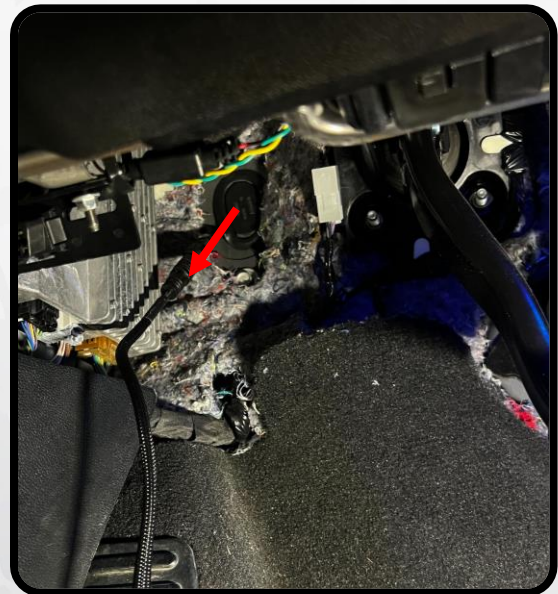
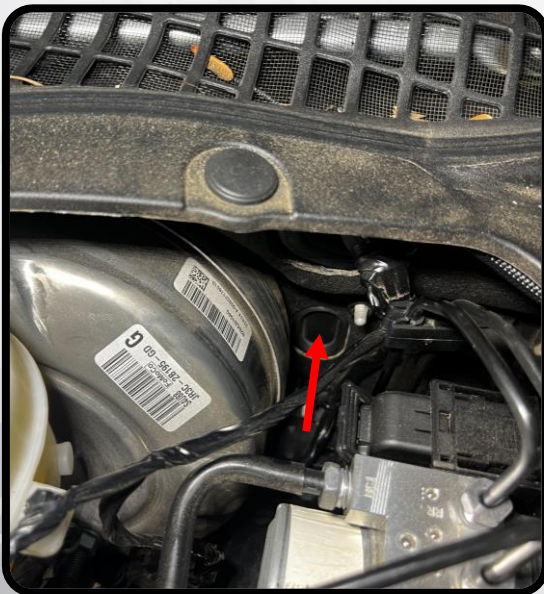


WIRE HARNESS INSTALLATION

15. ROUTE THE PUSH BUTTON SWITCH ACROSS THE ENGINE BAY TO THE DRIVER'S-SIDE OF THE BAY. YOU WILL NEED TO PASS THE HARNESS THROUGH A GROMMET ON THE FIREWALL OF THE CAR TO REACH THE INTERIOR



16. LOCATE A SUITABLE FIREWALL GROMMET YOU HAVE ACCESS TO FROM BOTH THE ENGINE BAY AND THE INTERIOR. DISCONNECT THE SWITCH AND PASS THE HARNESS THROUGH THE GROMMET INTO THE FOOTWELL OF THE INTERIOR. YOU WILL NEED TO MAKE A SMALL HOLE IN THE GROMMET TO FIT THE HARNESS THROUGH



WIRE HARNESS INSTALLATION

17. WITH THE HARNESS NOW IN THE VEHICLE'S INTERIOR, FIND A SUITABLE LOCATION TO MOUNT THE SWITCH. YOU WILL NEED TO DRILL A $\frac{3}{4}$ " HOLE IN YOUR DASH IN YOUR DESIRED LOCATION. ALWAYS CHECK BEHIND YOUR SURFACE BEFORE DRILLING TO ENSURE YOU DON'T CAUSE ANY UNINTENDED DAMAGE. MOUNT THE SWITCH AND RECONNECT IT TO THE HARNESS YOU ROUTED INTO THE FOOTWELL



18. CONFIRM THAT ALL FUNCTIONS ARE WORKING PROPERLY
19. GO THROUGH YOUR HARNESS AND SECURE ANY LOOSE/EXCESS WIRES USING ZIPTIES. BE SURE ALL WIRES ARE OUT OF THE WAY OF ANYTHING THAT MOVES OR GENERATES EXCESSIVE HEAT IN THE ENGINE BAY SUCH AS FANS, BELTS, WIPER ARMS, OR EXHAUST COMPONENTS
20. WITH THE PODS POWERED ON, YOU CAN NOW SET THE AIM OF THE LIGHTS TO YOUR PREFERENCE AND SECURE THE POD LIGHT HARDWARE IN THE DESIRED POSITION

- ENJOY YOUR NEW DRIFT LIGHTS! -

