



THE AUTOMOTIVE LIGHTING BENCHMARK

INSTALL GUIDE

XB EVO TYPE S SAE FOG LIGHTS

LF090/LF091



WARNING: IT IS THE INSTALLERS RESPONSIBILITY TO CONFIRM COMPLIANCE WITH STATE AND LOCAL LAWS. BY READING THIS DOCUMENT, YOU AGREE IT IS ONLY TO BE USED AS AN EDUCATIONAL GUIDE. MORIMOTO LIGHTING NOR ITS DEALERS MAKE GUARANTEES ON ANY FINISHED RESULTS, NOR ARE THEY TO BE HELD RESPONSIBLE FOR ANY DAMAGE, MISUSE, OR PERSONAL INJURIES. IF YOU ARE UNABLE TO CLEARLY UNDERSTAND AND ADAPT THE INFORMATION BELOW, PROFESSIONAL INSTALLATION IS RECOMMENDED.



XB EVO TYPE S SAE FOG LIGHTS

TABLE OF CONTENTS	PAGE
LAMIN-X FILM INSTALLATION (OPTIONAL)	3
FOG LIGHT INSTALLATION	4
AIMING	8
SWITCHING BETWEEN WHITE AND YELLOW (EVO+ MODEL ONLY)	9

WHAT'S INCLUDED



**2X (ONE PAIR) FOG
LIGHT ASSEMBLIES**



**8X 10MM MOUNTING
BOLTS**



**2X H11/H9/H8
CONNECTORS**

REQUIRED TOOLS

- **RATCHET**
- **10MM SOCKET**
- **#2 PHILLIP'S HEAD
SCREWDRIVER**

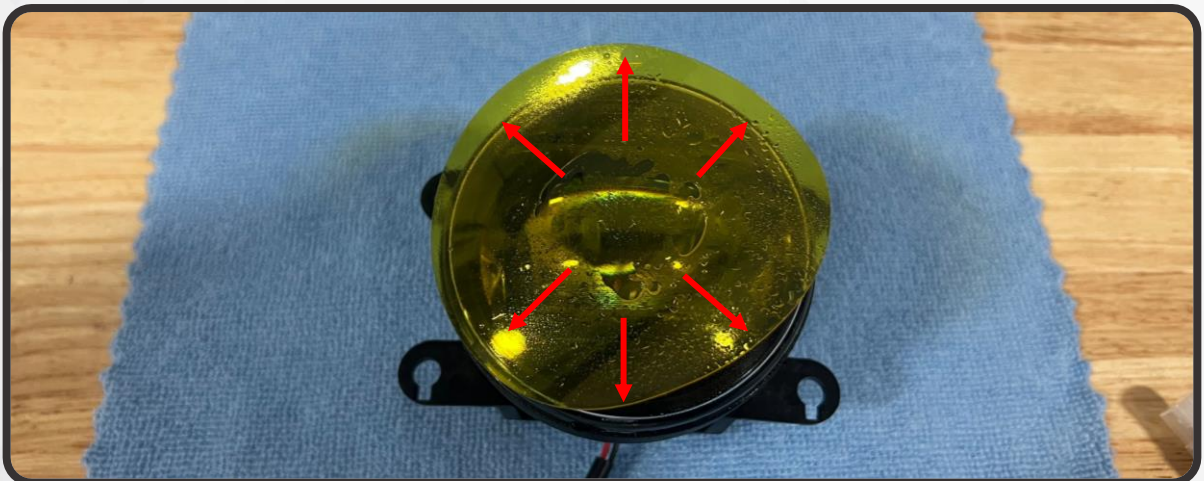


LAMIN-X FILM INSTALLATION (OPTIONAL)

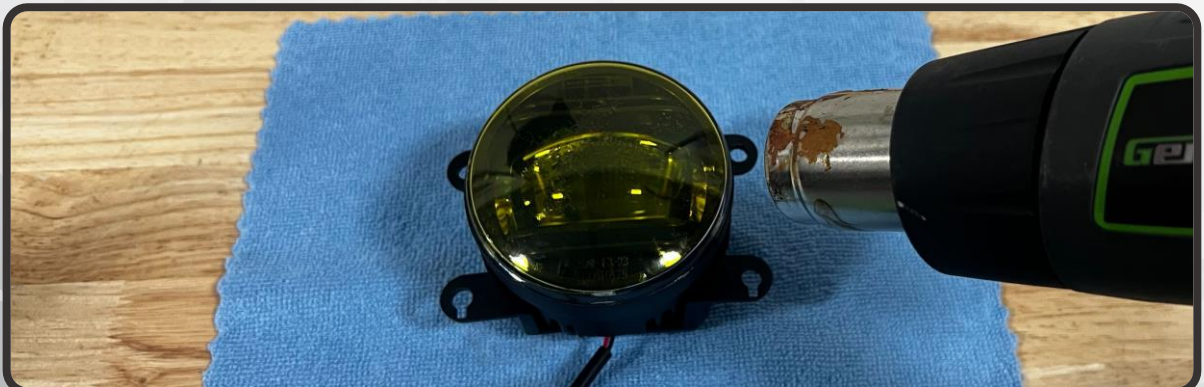
1. TO APPLY LAMIN-X FILM (SOLD SEPARATELY) TO YOUR FOG LIGHTS BEFORE INSTALLING, BEGIN BY PEELING THE PAPER BACKING OFF OF THE FILM, AND LIGHTLY MIST THE ADHESIVE SIDE OF THE FILM WITH WATER. TRY TO DIRECTLY TOUCH THE ADHESIVE AS LITTLE AS POSSIBLE



2. HOLDING ONTO THE VERY EDGES OF THE FILM, CENTER IT ON THE FOG LIGHT LENS AND PRESS DOWN GENTLY IN THE CENTER TO SECURE IT. USE YOUR THUMBS TO PRESS OUTWARD TO SMOOTH OUT THE FILM AND SECURE IT TO THE FOG LIGHT LENS



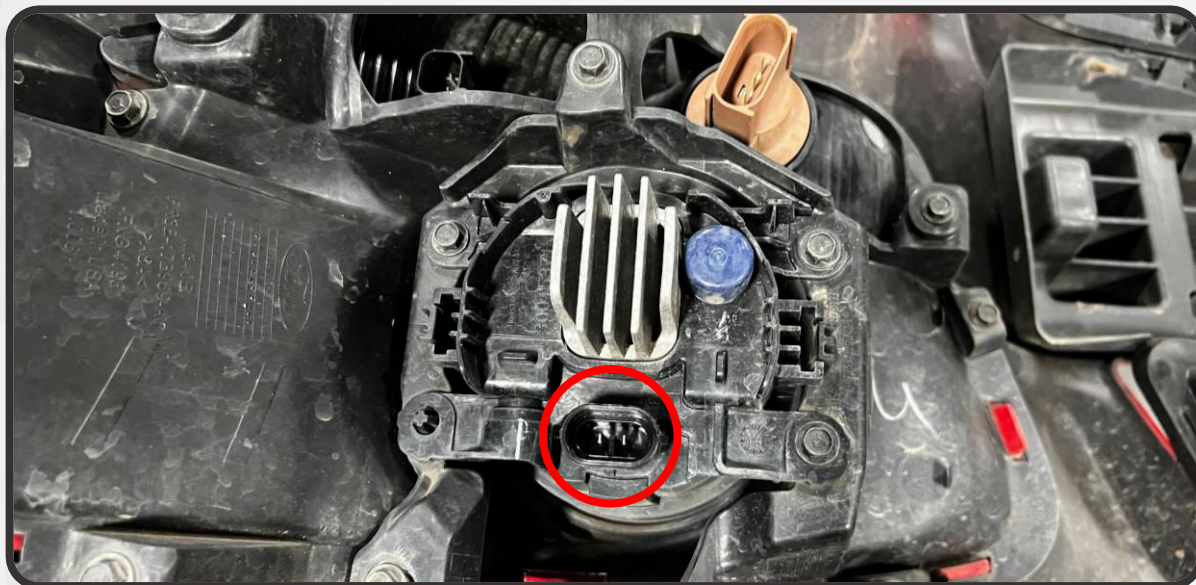
3. IF NECESSARY, USE A BLOW DRYER OR HEAT GUN ON LOW SETTING TO SLIGHTLY HEAT THE LAMIN-X AND PRESS ANY LIFTING AREAS



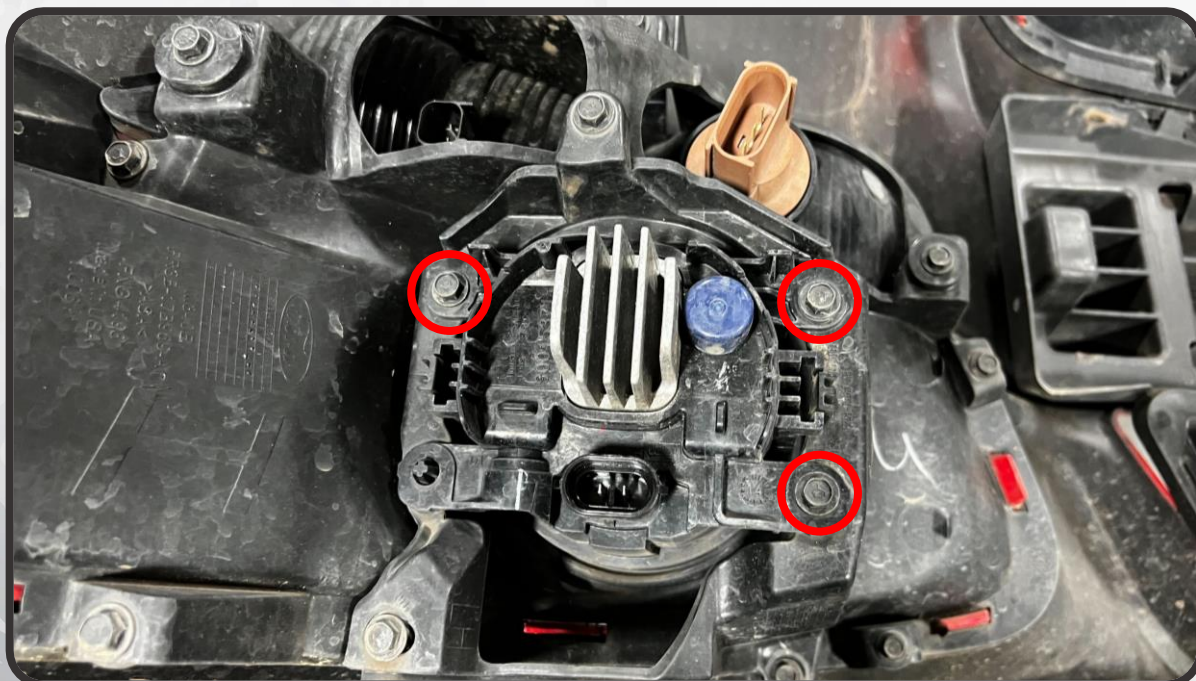
INSTALLATION

NOTE: THIS GUIDE IS MEANT TO SERVE AS A GENERAL OVERVIEW OF THE INSTALLATION PROCESS, HOWEVER THE FULL INSTALL PROCEDURE WILL VARY BETWEEN VEHICLES. CONSULT YOUR SERVICE MANUAL FOR APPLICATION-SPECIFIC INSTRUCTIONS

1. BEGIN BY ACCESSING THE REAR OF THE FACTORY FOG LIGHT ASSEMBLY AND DISCONNECTING THE FACTORY FOG LIGHT CONNECTOR

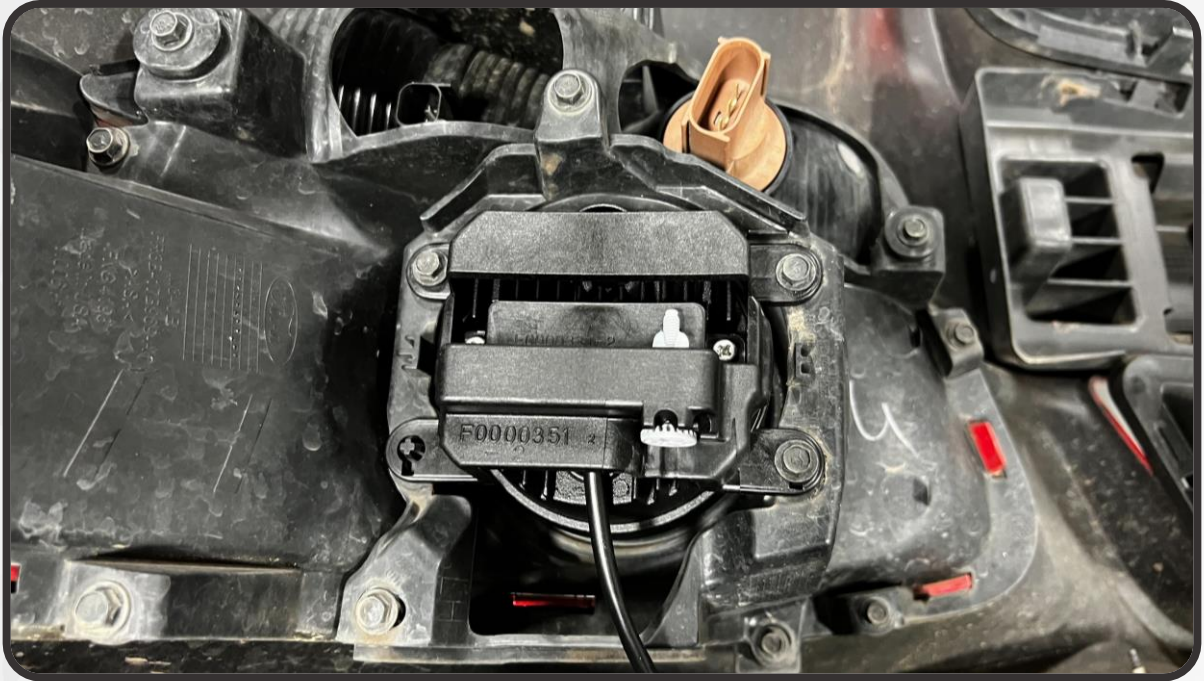


2. REMOVE THE HARDWARE SECURING THE FACTORY FOG LIGHT, AND REMOVE IT FROM THE VEHICLE

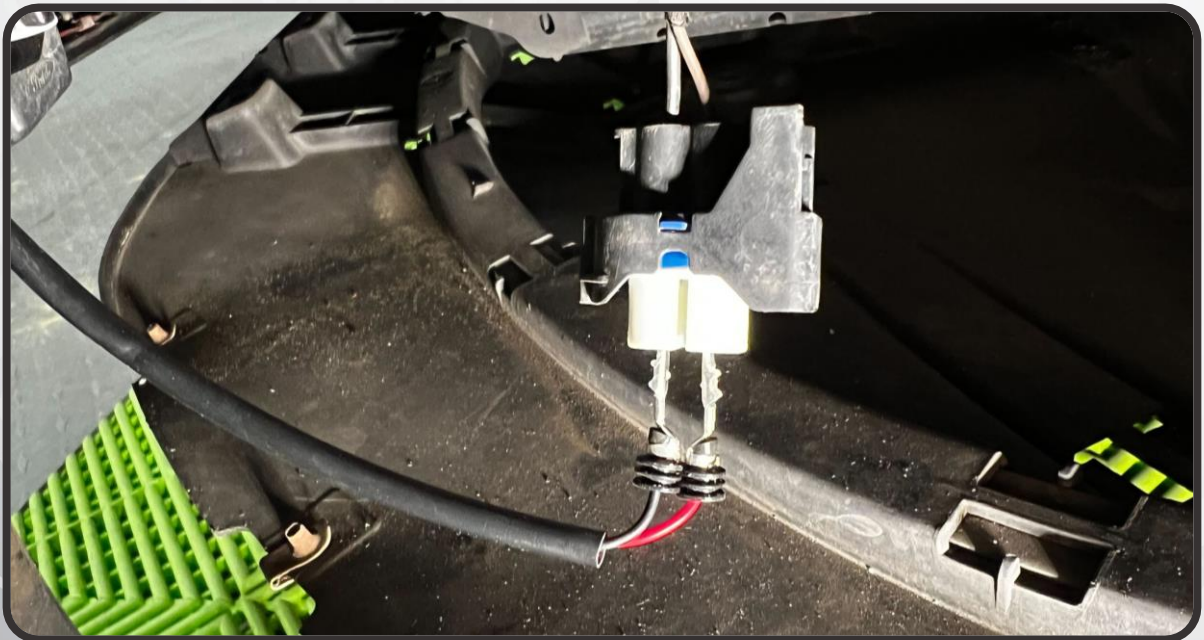


INSTALLATION

3. INSTALL THE NEW FOG LIGHT ASSEMBLY IN PLACE OF THE FACTORY ASSEMBLY, AND REINSTALL THE HARDWARE

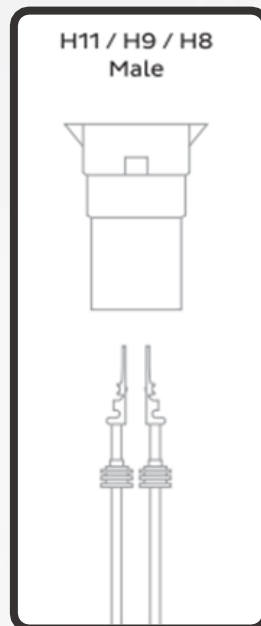


4. INSERT THE BARE PINS ON THE FOG LIGHT ASSEMBLY INTO THE STOCK FOG LIGHT CONNECTOR. MAKE SURE THAT THE PINS ARE NOT CONTACTING ONE ANOTHER, AND TEST THE FOG LIGHTS. IF THEY ARE NOT ILLUMINATING, SWAP THE PINS

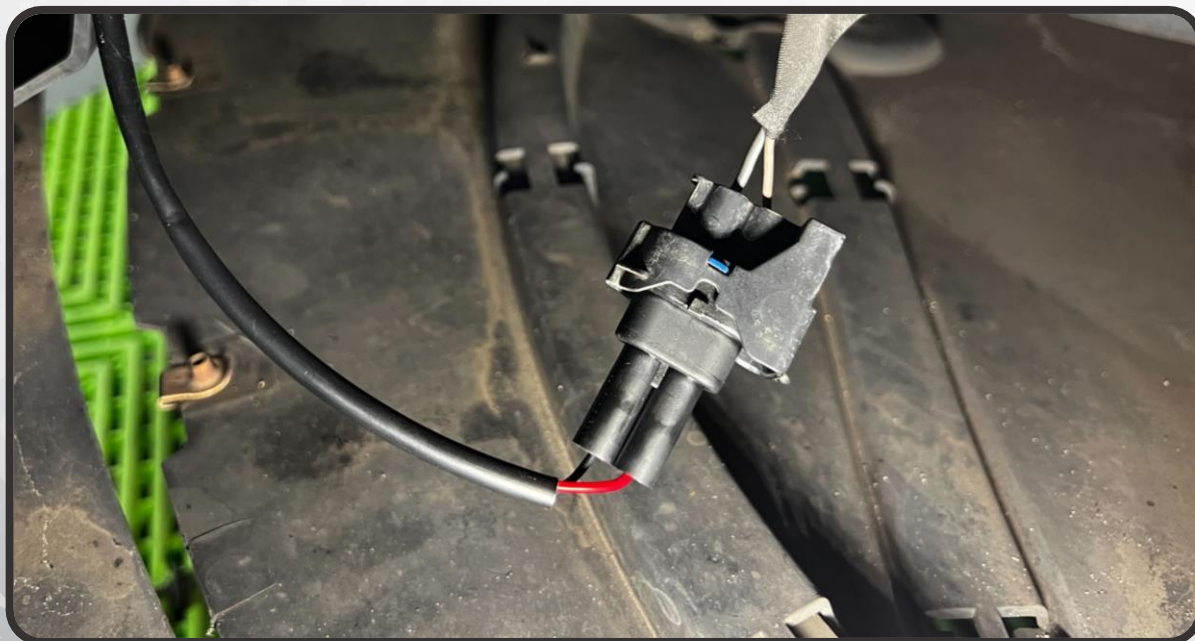


INSTALLATION

5. INSERT THE FOG LIGHT PINS INTO THE CONNECTOR IN THE SAME ORIENTATION YOU TESTED AND CONFIRMED ON THE FACTORY WIRING



6. WITH THE PINS INSERTED INTO THE CONNECTOR, CONNECT THE FOG LIGHT WIRING TO THE FACTORY WIRING



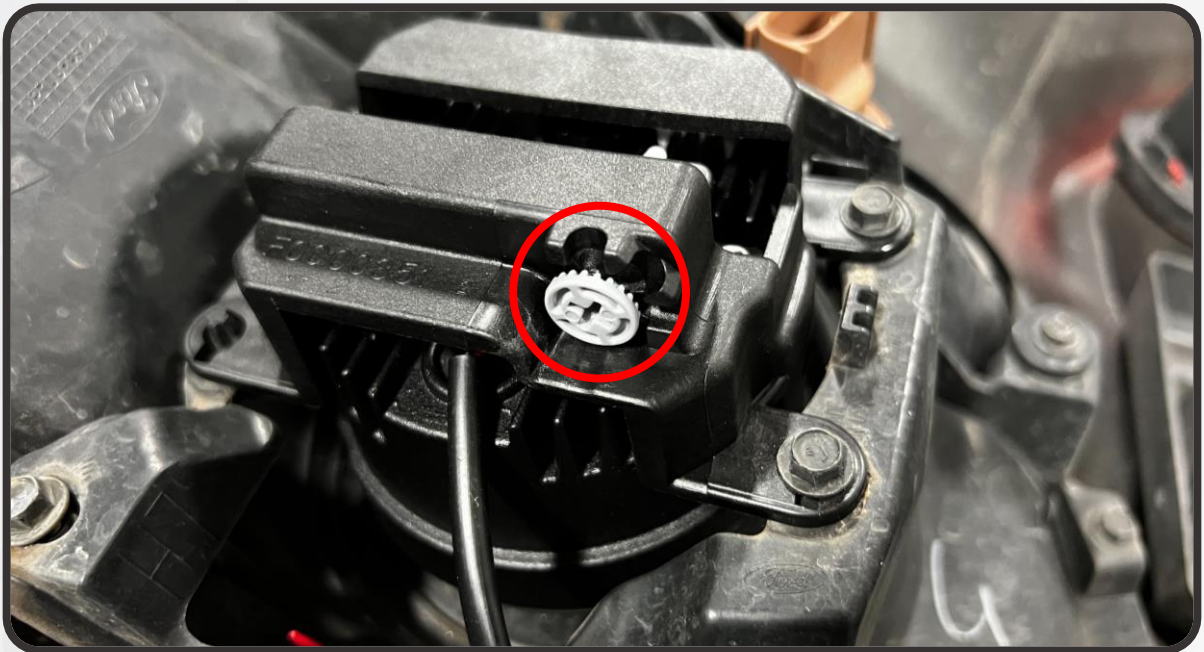
INSTALLATION

7. REPEAT THE INSTALLATION PROCESS ON THE OTHER FOG LIGHT
8. GET IN THE VEHICLE AND CONFIRM THAT ALL FUNCTIONS ARE WORKING PROPERLY
9. REASSEMBLE ANYTHING ON THE VEHICLE YOU REMOVED DURING THE INSTALL PROCESS

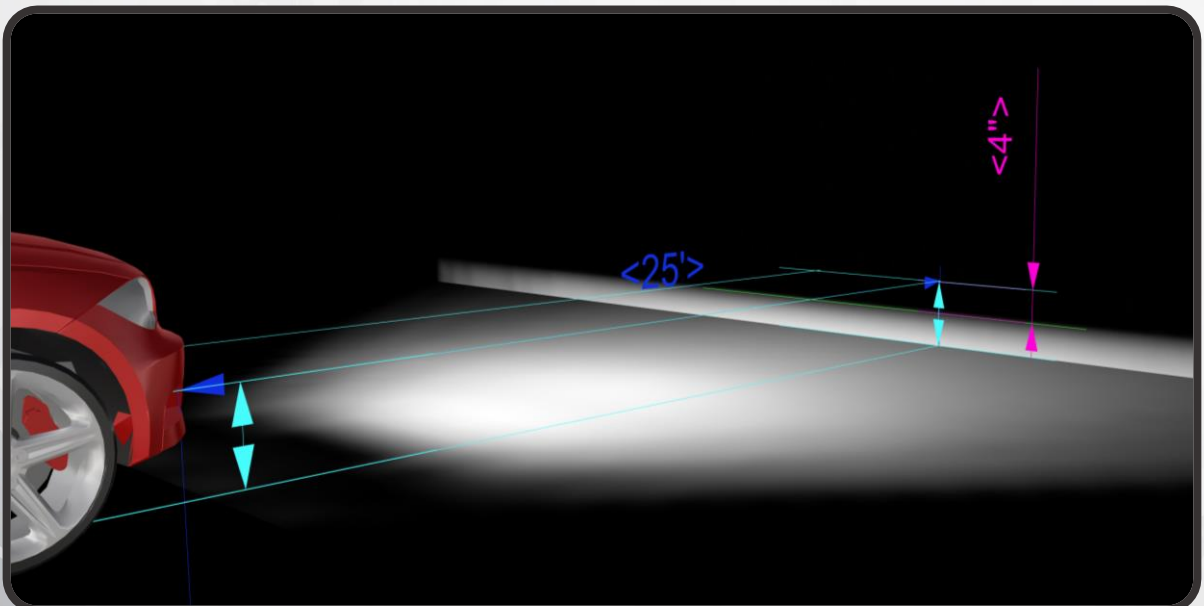


AIMING

- ONCE YOUR FOG LIGHT ASSEMBLIES ARE INSTALLED, THEY WILL NEED TO BE AIMED FOR YOUR VEHICLE. FOLLOW THE PROCEDURE BELOW TO AIM YOUR FOG LIGHTS USING A PHILLIPS HEAD SCREWDRIVER TO TURN THE ADJUSTER SCREW ON THE ASSEMBLY



- WITH THE CAR PARKED ON LEVEL GROUND, 25' FROM A WALL, MEASURE THE DISTANCE FROM THE GROUND TO THE CENTER OF THE FOG LIGHT, AND THE DISTANCE FROM THE GROUND TO THE TOP OF THE LIGHT'S BEAM ON THE WALL. THERE SHOULD BE A 4" DROP FROM THE CENTER OF THE FOG LIGHT ON THE CAR, TO THE TOP OF THE BEAM ON THE WALL



SWITCHING BETWEEN WHITE AND YELLOW (EVO+ MODEL ONLY)

ON THE XB EVO+ MODEL, SWITCH BETWEEN WHITE AND YELLOW OUTPUT BY TURNING OFF YOUR FOG LIGHT, WAITING A MINIMUM OF THREE SECONDS, AND TURNING THEM BACK ON

