



THE AUTOMOTIVE LIGHTING BENCHMARK

# INSTALL GUIDE

## MORIMOTO 4BANGER FOG BRACKETS: TYPE C

BAF065



WARNING: IT IS THE INSTALLERS RESPONSIBILITY TO CONFIRM COMPLIANCE WITH STATE AND LOCAL LAWS. BY READING THIS DOCUMENT, YOU AGREE IT IS ONLY TO BE USED AS AN EDUCATIONAL GUIDE. MORIMOTO LIGHTING NOR ITS DEALERS MAKE GUARANTEES ON ANY FINISHED RESULTS, NOR ARE THEY TO BE HELD RESPONSIBLE FOR ANY DAMAGE, MISUSE, OR PERSONAL INJURIES. IF YOU ARE UNABLE TO CLEARLY UNDERSTAND AND ADAPT THE INFORMATION BELOW, PROFESSIONAL INSTALLATION IS RECOMMENDED.



# MORIMOTO 4BANGER FOG BRACKETS: TYPE C

TABLE OF CONTENTS	PAGE
DISASSEMBLY -----	3
BRACKET ASSEMBLY -----	5
INSTALLATION -----	8
AIMING -----	10

## WHAT'S INCLUDED



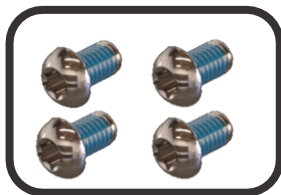
2X (ONE PAIR)  
FRONT BEZELS



2X (ONE PAIR) 4BANGER  
BRACKETS



2X 5202 SOCKET  
ADAPTERS



4X T30 TORX BOLTS



6X T20 TORX  
SCREWS



## REQUIRED TOOLS

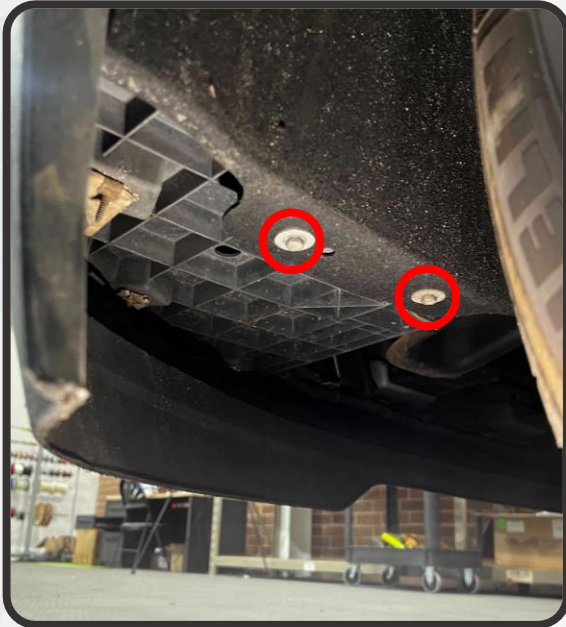
- T20 TORX DRIVER
- T30 TORX DRIVER
- SMALL PRY TOOL
- RATCHET
- 7MM SOCKET
- LONG #2 PHILLIP'S HEAD SCREWDRIVER



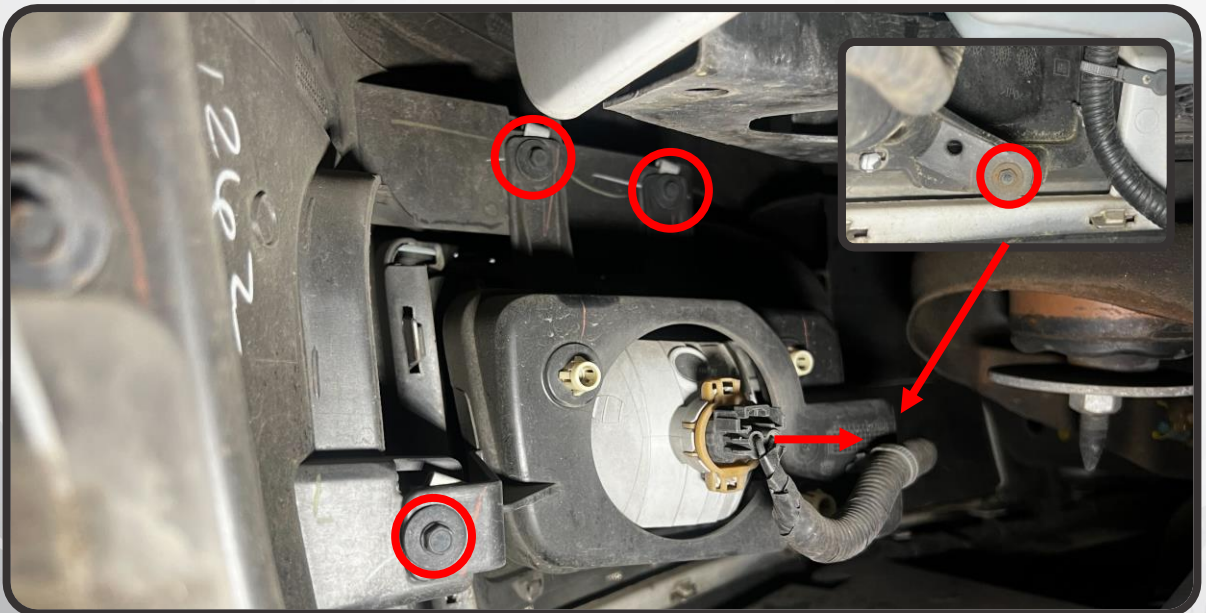
# DISASSEMBLY

NOTE: THIS GUIDE IS MEANT TO SERVE AS A GENERAL OVERVIEW OF THE INSTALLATION PROCESS, HOWEVER THE FULL INSTALL PROCEDURE WILL VARY BETWEEN VEHICLES. CONSULT YOUR SERVICE MANUAL FOR APPLICATION-SPECIFIC INSTRUCTIONS

1. REMOVE THE FENDER LINER HARDWARE AND PULL BACK THE FENDER LINER TO ACCESS THE BACK OF THE FOG LIGHT ASSEMBLY



2. DISCONNECT THE FOG LIGHT PLUG AND REMOVE THE HARDWARE SECURING THE FOG LIGHT BUCKET TO THE VEHICLE



## DISASSEMBLY

3. DEPRESS THE FOUR TABS ON EACH OF THE THREE YELLOW FOG LIGHT MOUNTS, AND PUSH THEM FORWARD THROUGH THE HOLE. WITH THESE MOUNTS RELEASED, PULL THE FOG LIGHT BUCKET BACK, AND PULL THE FOG LIGHT ASSEMBLY OUT OF THE BUCKET AND OFF OF THE VEHICLE

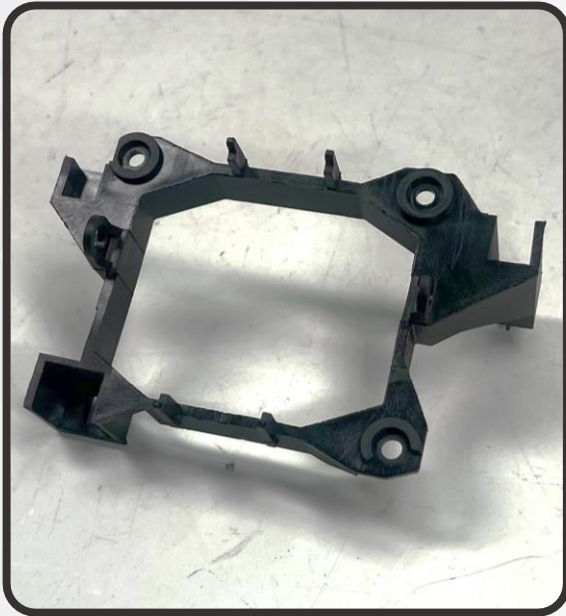


4. REPEAT STEPS 1-3 ON THE OPPOSITE SIDE OF THE VEHICLE AND SET THE FACTORY FOG LIGHT ASSEMBLIES ASIDE FOR NOW

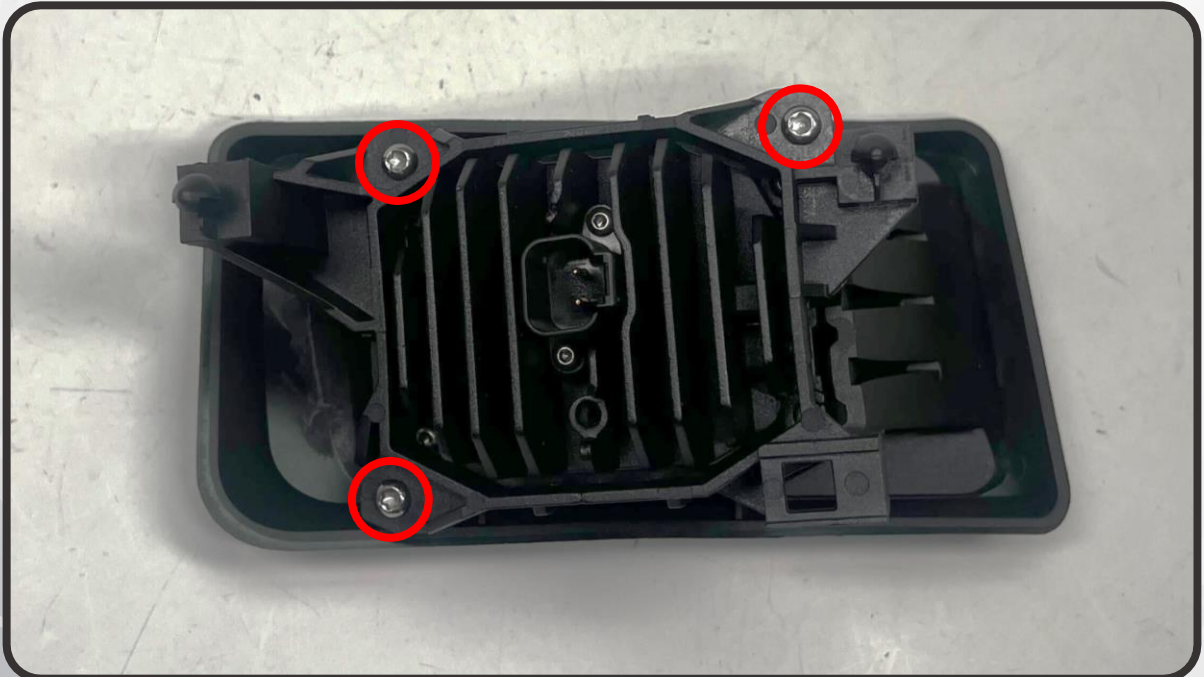


## BRACKET ASSEMBLY

5. BEGIN ASSEMBLING YOUR 4BANGER FOG LIGHTS BY PLACING THE 4BANGER BRACKET ON A WORK BENCH AND FITTING THE 4BANGER POD LIGHT INTO THE BRACKET. SECURE THE POD TO THE BRACKET USING TWO OF THE INCLUDED T30 TORX BOLTS

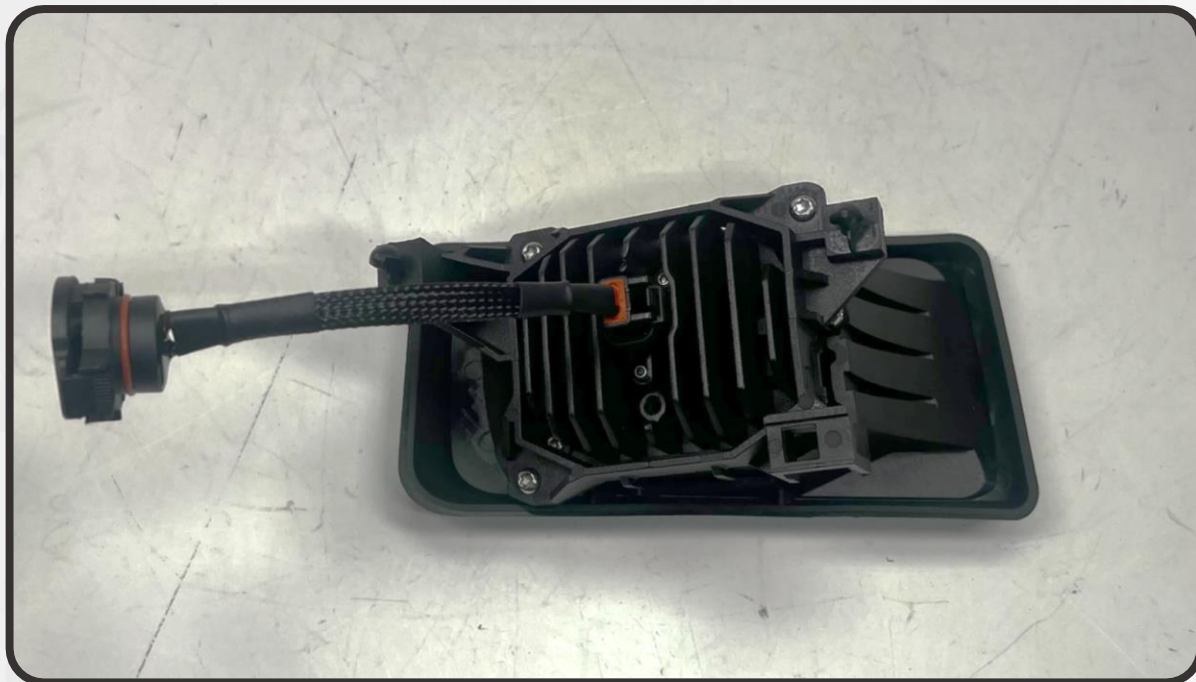


6. WITH THE FOG LIGHT BEZEL FACE-DOWN, PLACE THE 4BANGER BRACKET AND 4BANGER INTO THE BACK OF THE BEZEL, AND SECURE THE BRACKET TO THE BEZEL USING THREE OF THE INCLUDED T20 TORX SCREWS



## BRACKET ASSEMBLY

7. PLUG THE INCLUDED 5202 ADAPTER INTO THE BACK OF THE 4BANGER



8. TAKE YOUR FACTORY FOG LIGHT ASSEMBLY AND USE A SMALL PRY TOOL TO PRY THE TOP TWO YELLOW MOUNTS OFF OF THEIR BALL JOINTS. INSTALL THE MOUNTS ONTO THE CORRESPONDING POINTS ON THE NEW ASSEMBLY



## BRACKET ASSEMBLY

9. UNSCREW THE ADJUSTER AND REMOVE IT FROM THE ASSEMBLY, THEN PINCH THE ADJUSTER CLIP AND REMOVE IT AS WELL



10. INSTALL THE ADJUSTER AND ADJUSTER CLIP ONTO THE 4BANGER BRACKET



11. REPEAT STEPS 5-10 FOR THE OTHER FOG LIGHT

# INSTALLATION

12. FIT THE NEW 4BANGER FOG LIGHT INTO THE FACTORY FOG LIGHT BUCKET, MAKING SURE ALL THREE OF THE YELLOW MOUNTS CLIP INTO PLACE



13. REINSTALL THE FOG LIGHT BUCKET ONTO THE VEHICLE, AND PLUG THE 4BANGER INTO THE FACTORY FOG LIGHT CONNECTOR





# INSTALLATION

14. REPEAT STEPS 12 AND 13 ON THE OPPOSITE SIDE OF THE VEHICLE
15. TEST AND CONFIRM THAT ALL FUNCTIONS ARE WORKING PROPERLY
16. REINSTALL THE FENDER LINER ON BOTH SIDES



## AIMING

- ONCE YOUR FOG LIGHT ASSEMBLIES ARE INSTALLED, THEY WILL NEED TO BE AIMED FOR YOUR VEHICLE. THIS CAN BE DONE THROUGH THE ACCESS HOLE IN THE UNDERTRAY BENEATH THE FOG LIGHT. USING A PHILLIPS HEAD SCREWDRIVER TO TURN THE ADJUSTER SCREW ON THE ASSEMBLY FOLLOW THE PROCEDURE BELOW TO AIM YOUR FOG LIGHTS



- WITH THE CAR PARKED ON LEVEL GROUND, 25' FROM A WALL, MEASURE THE DISTANCE FROM THE GROUND TO THE CENTER OF THE FOG LIGHT, AND THE DISTANCE FROM THE GROUND TO THE TOP OF THE LIGHT'S BEAM ON THE WALL. THERE SHOULD BE A 4" DROP FROM THE CENTER OF THE FOG LIGHT ON THE CAR, TO THE TOP OF THE BEAM ON THE WALL

