



THE AUTOMOTIVE LIGHTING BENCHMARK

INSTALL GUIDE

DRIFT LIGHT BRACKETS: NISSAN 370Z (09-21)

BAF143

WHAT'S INCLUDED



2X (PAIR) DRIFT
LIGHT BRACKETS



2X WIRE CLIPS



REQUIRED TOOLS

- RACHET
- 12MM SOCKET
- 17MM WRENCH
- T30 TORX BIT
- ZIP TIES

WARNING: IT IS THE INSTALLERS RESPONSIBILITY TO CONFIRM COMPLIANCE WITH STATE AND LOCAL LAWS. BY READING THIS DOCUMENT, YOU AGREE IT IS ONLY TO BE USED AS AN EDUCATIONAL GUIDE. MORIMOTO LIGHTING NOR ITS DEALERS MAKE GUARANTEES ON ANY FINISHED RESULTS, NOR ARE THEY TO BE HELD RESPONSIBLE FOR ANY DAMAGE, MISUSE, OR PERSONAL INJURIES. IF YOU ARE UNABLE TO CLEARLY UNDERSTAND AND ADAPT THE INFORMATION BELOW, PROFESSIONAL INSTALLATION IS RECOMMENDED.

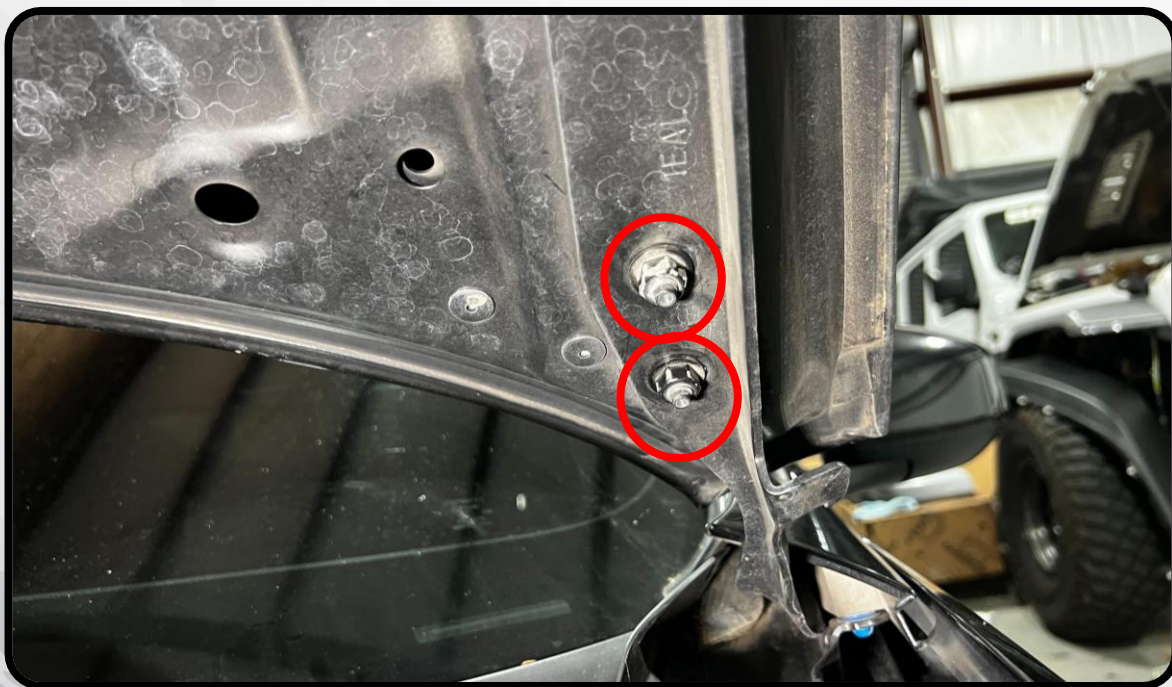


BRACKET INSTALLATION

1. BEGIN BY INSERTING ONE OF THE INCLUDED WIRES CLIPS INTO EACH BRACKET INTO THE SQUARE HOLES, FACING "OUTWARDS" AS SHOWN BELOW



2. RAISE THE HOOD OF THE CAR AND LOCATE THE TWO 12MM HOOD HINGE NUTS CLOSEST TO THE REAR OF THE HOOD. LOOSEN (BUT DO NOT REMOVE) EACH UNTIL THERE IS APPROXIMATELY A 4MM GAP BETWEEN THE NUT AND THE HOOD HINGE



BRACKET INSTALLATION

3. SLIP THE DRIFT LIGHT BRACKET IN BETWEEN THE LOOSENED NUTS AND THE HOOD HINGE. WITH THE BRACKET IN PLACE, RETIGHTEN THE TWO NUTS



4. REPEAT STEPS 2 AND 3 ON THE OPPOSITE SIDE OF THE CAR
5. TO INSTALL YOUR POD LIGHTS, CLOSE THE HOOD AND PLACE THE U-BRACKET ON THE DRIFT LIGHT BRACKET. SECURE IT TO THE BRACKET USING THE CARRIAGE BOLT AND 17MM NUT. HOLD THE TOP OF THE BOLT DOWN WITH YOUR HAND AND TIGHTEN THE NUT WITH A 17MM WRENCH. LEAVE IT SLIGHTLY LOOSE SO THAT THE POD CAN BE AIMED LATER



BRACKET INSTALLATION

6. SECURE THE POD TO THE U-BRACKET WITH THE TWO PROVIDED SCREWS USING A T30 TORX BIT. LEAVE THESE SLIGHTLY LOOSE AS WELL TO ALLOW AIMING LATER



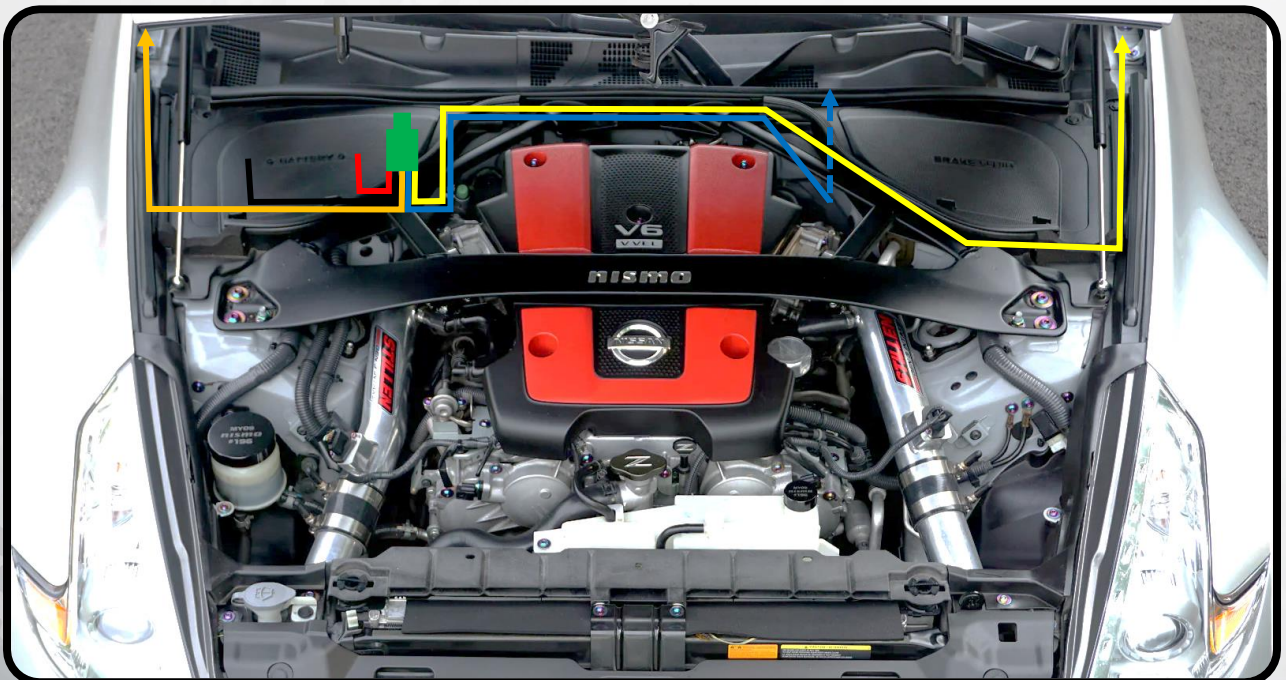
7. REPEAT STEPS 5 AND 6 ON THE OPPOSITE SIDE OF THE CAR



WIRE HARNESS INSTALLATION

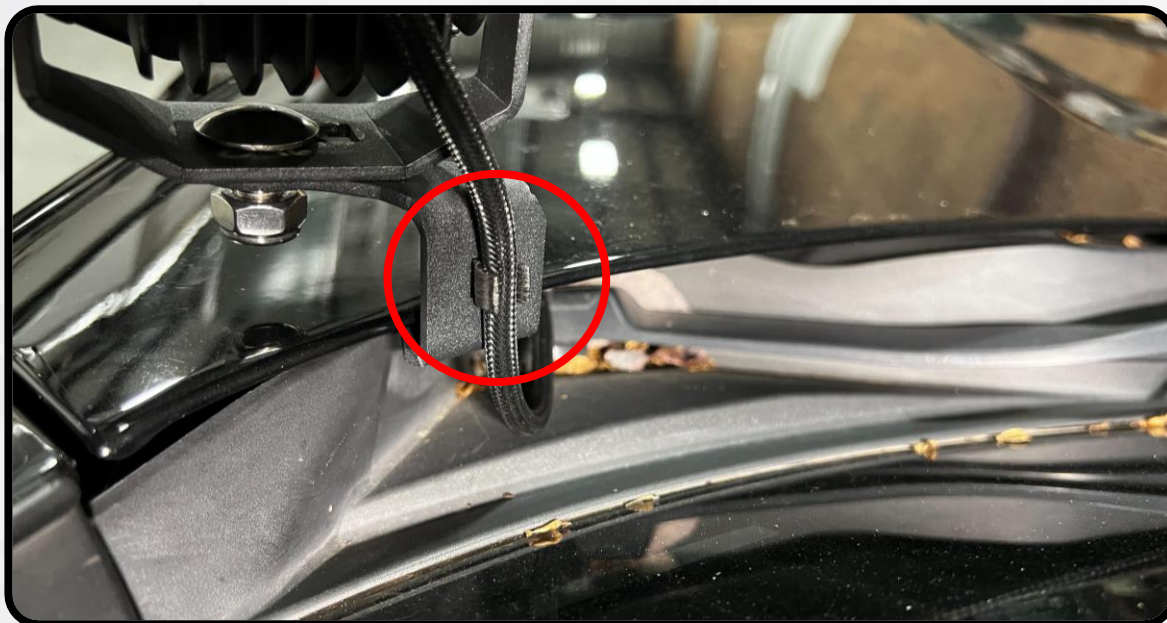
8. INSTALL YOUR RELAY POWER HARNESS USING THE FIGURE BELOW AS A GUIDE
 - A. MOUNT YOUR RELAY UPRIGHT NEAR THE VEHICLE'S BATTERY (GREEN IN FIGURE)
 - B. CONNECT THE RED RING TERMINAL LABELED "BATTERY +" TO THE POSITIVE TERMINAL ON THE BATTERY (RED IN FIGURE)
 - C. CONNECT THE BLACK RING TERMINAL LABELED "GROUND -" TO A SUTABLE BARE-METAL GROUND, OR THE NEGATIVE TERMINAL ON THE BATTERY (BLACK IN FIGURE)
 - D. ROUTE THE "LIGHT 1" CONNECTOR UP TO THE NEAREST POD LIGHT (ORANGE IN FIGURE)
 - E. ROUTE THE "LIGHT 2" CONNECTOR ACROSS THE BAY TO THE OPPOSITE POD LIGHT. THE EXTENSIONS INCLUDED WITH YOUR HARNESS MAY BE REQUIRED (YELLOW IN FIGURE)
 - F. THE "SWITCH" WIRE (BLUE IN FIGURE) CAN BE USED TO ACITVATE THE PODS IN ONE OF TWO WAYS:
 - 1) TO TAP INTO AN EXISTING SWITCH PANEL/CONTROLLER: REMOVE THE PUSH BUTTON AND ATTACH THE BARE WIRE INPUT ADAPTER ON THE INPUT HARNESS TO CONNECT TO YOUR DESIRED TRIGGER
 - 2) TO USE THE INCLUDED PUSH-BUTTON: ROUTE THE HARNESS ACROSS THE ENGINE BAY TO THE DRIVER SIDE OF THE VEHICLE. LOCATE A SUTABLE GROMMET ON THE FIREWALL TO PASS THROUGH TO THE INTERIOR FOOTWELL. DISCONNECT THE SWITCH AND PASS THE HARNESS THROUGH THE GROMMET AND INTO THE INTERIOR. DRILL A $\frac{3}{4}$ " HOLE IN YOUR DASH IN YOUR DESIRED LOCATION. MOUNT THE SWITCH AND RECONNECT IT TO THE HARNESS YOU ROUTED INTO THE FOOTWELL

ONCE ALL OF YOUR WIRES ARE ROUTED, BE SURE ALL WIRES ARE SECURED AND OUT OF THE WAY OF ANYTHING THAT MOVES OR GENERATES EXCESSIVE HEAT IN THE ENGINE BAY SUCH AS FANS, BELTS, WIPER ARMS, OR EXHAUST COMPONENTS



FINAL INSTALLATION

9. REOPEN THE HOOD AND ROUTE YOUR WIRING UP THE BACK OF THE BRACKET BY CLIPPING THE WIRE INTO THE WIRE CLIP



10. ONCE THE PODS ARE WIRED UP, POWER THEM ON, AND DECIDE HOW YOU'D LIKE TO AIM THEM. ONCE YOU SETTLE ON YOUR PREFERRED AIM, TIGHTEN THE TWO T30 TORX SCREWS AND THE 17MM NUT DOWN IN THE DESIRED POSITION



- ENJOY YOUR NEW DRIFT LIGHTS! -

