



BRIGHT IS ONLY THE BEGINNING

# INSTALL GUIDE

## C7 CORVETTE XB HEADLIGHTS

LF779



WARNING: IT IS THE INSTALLERS RESPONSIBILITY TO CONFIRM COMPLIANCE WITH STATE AND LOCAL LAWS. BY READING THIS DOCUMENT, YOU AGREE IT IS ONLY TO BE USED AS AN EDUCATIONAL GUIDE. MORIMOTO LIGHTING NOR ITS DEALERS MAKE GUARANTEES ON ANY FINISHED RESULTS, NOR ARE THEY TO BE HELD RESPONSIBLE FOR ANY DAMAGE, MISUSE, OR PERSONAL INJURIES. IF YOU ARE UNABLE TO CLEARLY UNDERSTAND AND ADAPT THE INFORMATION BELOW, PROFESSIONAL INSTALLATION IS RECOMMENDED.

IMPORTANT: IF YOUR VEHICLE IS EQUIPPED WITH ANYTHING BUT MORIMOTO OR OEM TAILLIGHTS, SIDE MARKERS OR OTHER OEM EXTERIOR LIGHTING; YOU MAY EXPERIENCE A HYPER FLASH AND/OR PROBLEM WITH THE SEQUENTIAL SIGNAL SETTING ON THESE HEADLIGHTS. THIS IS NOT A DEFECT IN THE HEADLIGHT AND CAUSED BY UN-MATCHED IMPEDANCE WITH YOUR ORIGINAL VEHICLE SETTINGS.



# C7 CORVETTE XB HEADLIGHTS

TABLE OF CONTENTS	PAGE
DISASSEMBLY -----	3
HEADLIGHT CONFIGURATION -----	10
HEADLIGHT INSTALLATION -----	11
AIMING -----	12

## WHAT'S INCLUDED



2X (PAIR) HEADLIGHTS



4X PAIRS OF MODE  
SELECTOR KEYS



## REQUIRED TOOLS

- PRY TOOL
- RATCHET
- 7MM SOCKET
- 10MM SOCKET
- 10MM SOCKET
- T15 TORX BIT
- T30 TORX BIT
- PHILLIPS HEAD SCREWDRIVER



## DISASSEMBLY

1. BEGIN BY JACKING UP THE CAR AND SECURING IT ON JACK STANDS, PUTTING THE CAR ON A LIFT, OR PULLING IT ONTO A SET OF RAMPS
2. REMOVE THE TEN 7MM HEX HEAD SCREWS FROM THE UNDERSIDE OF THE FRONT BUMPER COVER

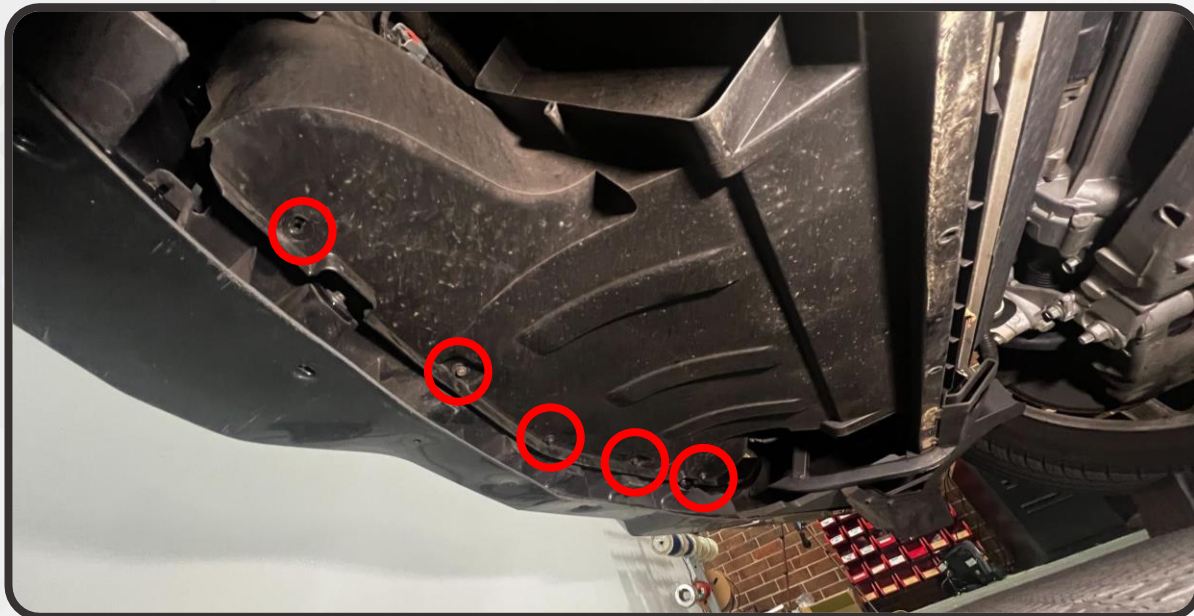


3. REMOVE THE FOUR 10MM BOLTS AT THE REAR EDGE OF THE FRONT UNDERTRAY. BE PREPARED FOR THE UNDERTRAY TO DROP WHEN YOU REMOVE THE LAST BOLT. REMOVE THE UNDERTRAY IT AND SET IT ASIDE



## DISASSEMBLY

4. WITH THE UNDERTRAY REMOVED, REMOVE THE FIVE 7MM HEX HEAD SCREWS THAT SECURE THE AIR DUCT TO THE FRONT BUMPER COVER

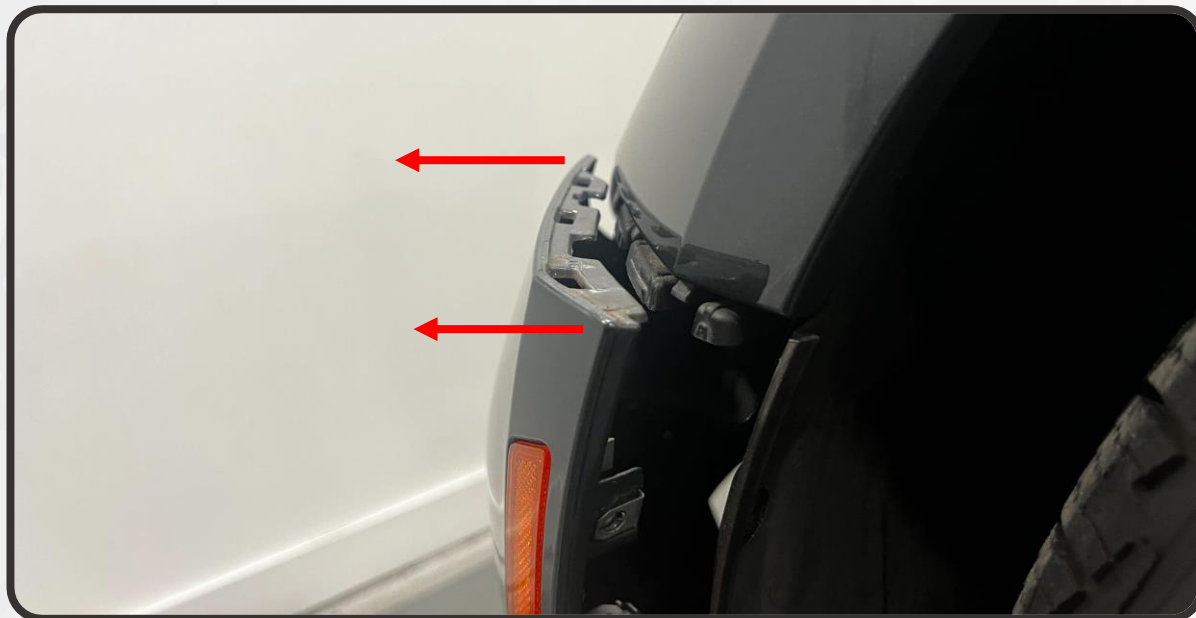


5. REMOVE THE THREE T15 TORX SCREWS SECURING THE FENDER LINER TO THE FRONT BUMPER COVER. IT MAY HELP TO TURN THE WHEEL TO THE SIDE TO GAIN ADDITIONAL SPACE TO ACCESS THEM



## DISASSEMBLY

6. PULL THE SIDE OF THE FRONT BUMPER COVER AWAY FROM THE FENDER, POPPING IT OUT OF THE PLASTIC BRACKET ITS CLIPPED INTO

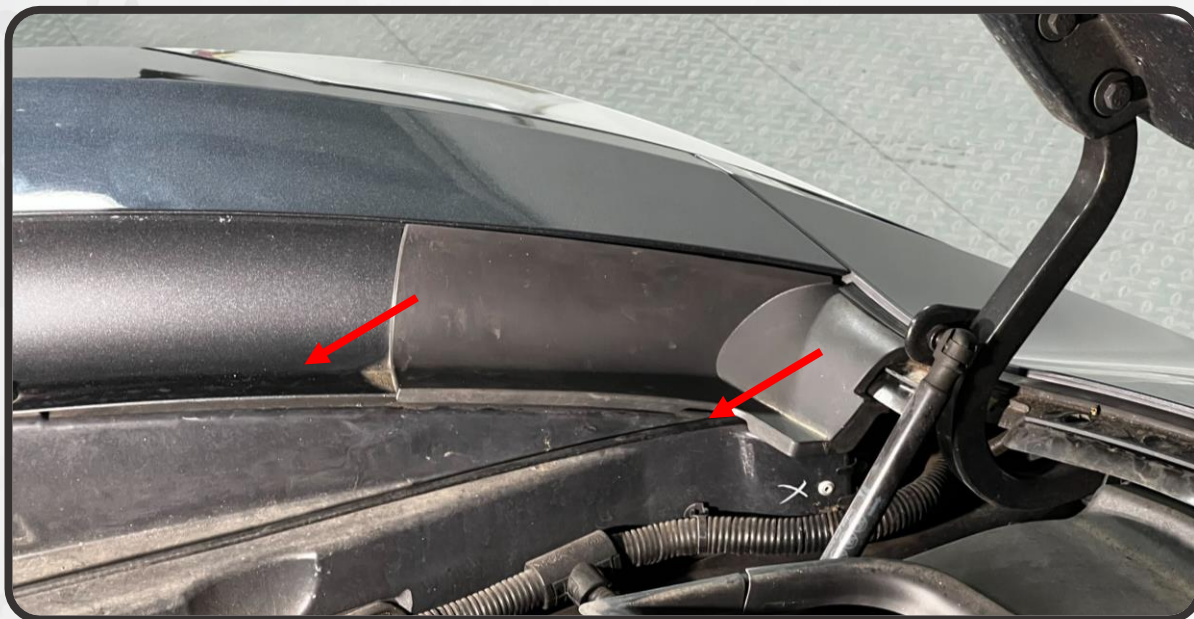


7. WHILE GENTLY FLEXING THE BUMPER COVER AWAY FROM THE CAR AND THE FENDER LINER TOWARDS THE CAR, REACH BEHIND THE BUMPER COVER AND DISCONNECT THE PLUG ON THE SIDE MARKER

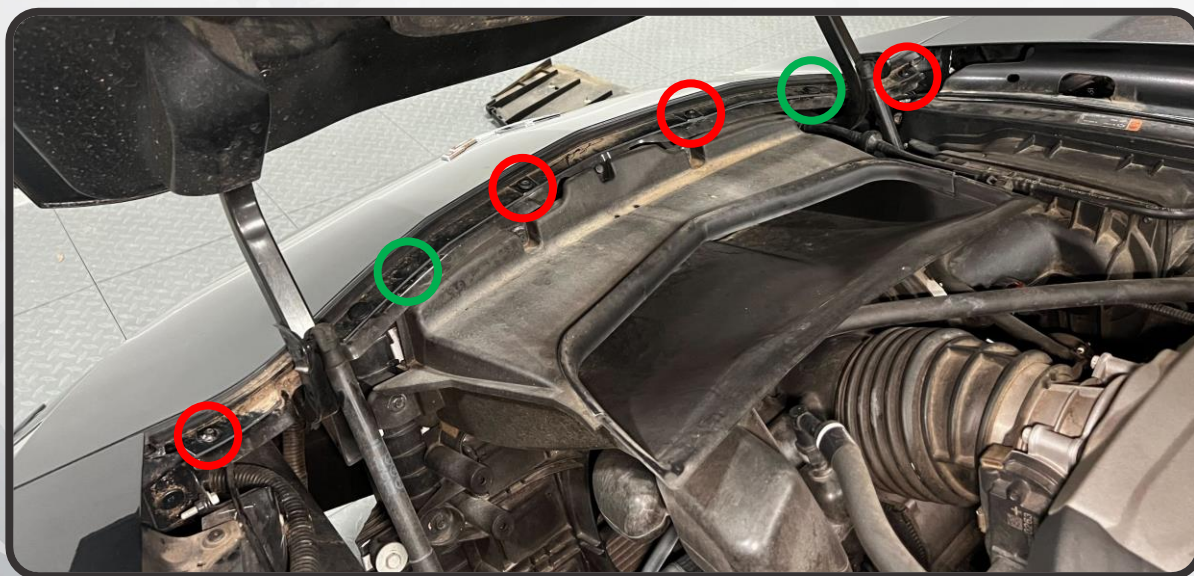


## DISASSEMBLY

8. REPEAT STEPS 5-7 ON THE OPPOSITE SIDE OF THE CAR
9. RAISE THE HOOD OF THE CAR
10. REMOVE THE PLASTIC TRIM PIECE IN EACH OF THE FRONT CORNERS OF THE ENGINE BAY BY PRYING THEM OUT WITH A PRY TOOL

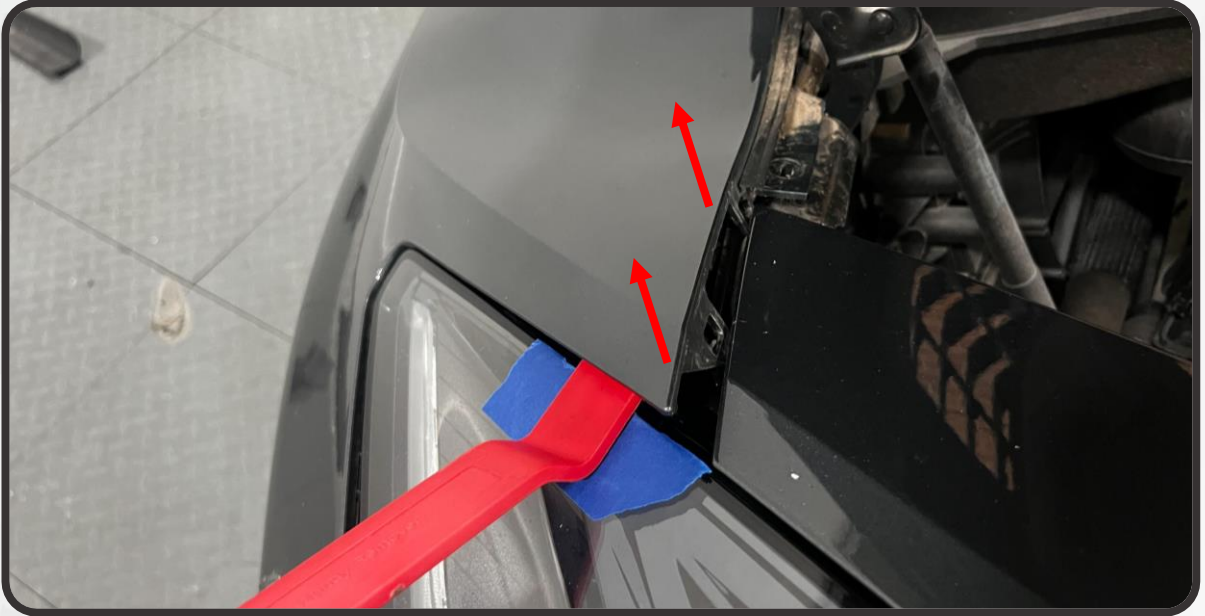


11. REMOVE THE FOUR T30 TORX SCREWS (CIRCLED IN RED) AND TWO PUSH CLIPS (CIRCLED IN GREEN) FROM ALONG THE UPPER EDGE OF THE FRONT BUMPER COVER



## DISASSEMBLY

12. LIFT UP ON THE UPPER CORNERS OF THE BUMPER COVER NEXT TO THE HEADLIGHTS. WE RECOMMEND USING A PLASTIC PRY TOOL TO DO THIS, AND SOME PAINTERS TAPE TO PROTECT THE HEADLIGHT LENS. THE BUMPER COVER WILL POP OUT OF THE BRACKET SECURING IT. DO THIS ON BOTH SIDES



13. LIFT THE BUMPER COVER UP AND OFF THE VEHICLE. THIS INSTALL WAS DONE ON A STINGRAY, BUT OTHER TRIMS MAY HAVE ADDITIONAL SENSORS/CAMERAS INTEGRATED INTO THE FRONT BUMPER COVER. VERIFY IF YOUR MODEL DOES, AND DISCONNECT THEM IF EQUIPPED

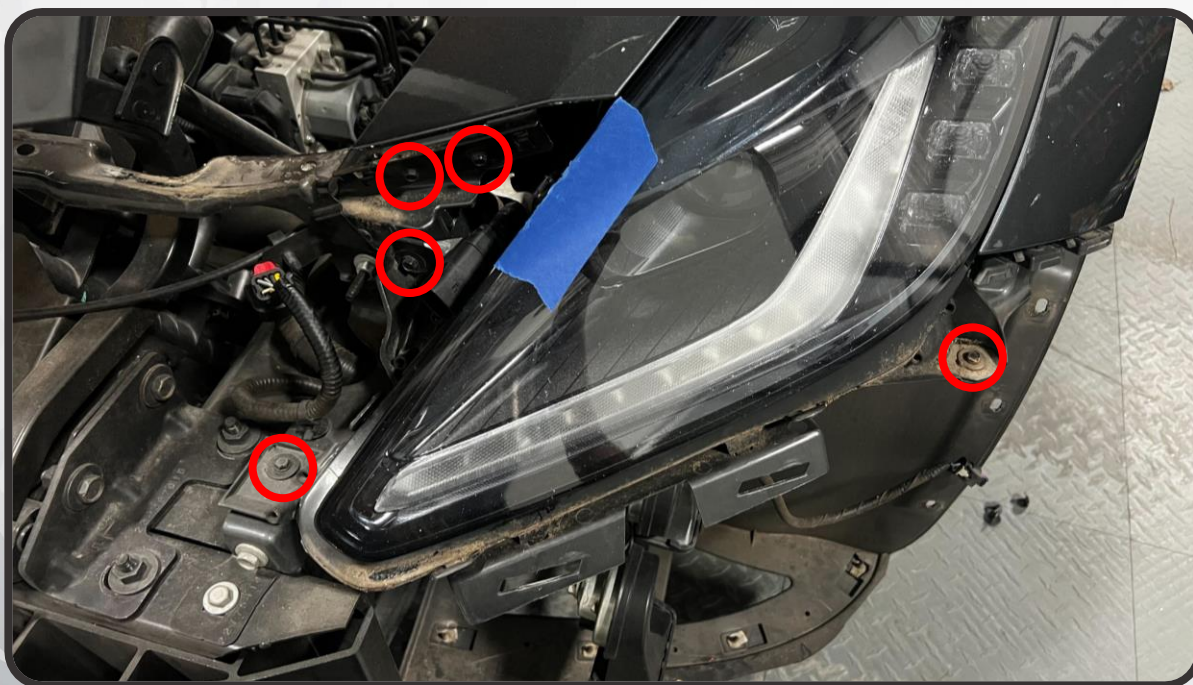


## DISASSEMBLY

14. DISCONNECT THE MAIN HEADLIGHT CONNECTOR LOCATED NEXT TO THE HOUSING. DO THIS BY PULLING THE RED TAB BACKWARDS INTO THE "UNLOCKED" POSITION, THEN PRESS DOWN ON THE CLIP AND PULL IT APART



15. REMOVE THE THREE 7MM BOLTS SECURING THE HEADLIGHT TO THE CAR, AND THE TWO 7MM BOLTS SECURING THE BUMPER BRACKET TO THE CAR. SET THE BUMPER BRACKET ASIDE





## DISASSEMBLY

16. SLIDE THE HEADLIGHT ASSEMBLY FORWARD TO REMOVE IT FROM THE CAR



17. REPEAT STEPS 14-16 ON THE OPPOSITE SIDE OF THE CAR



# HEADLIGHT CONFIGURATION

18. WITH THE MORIMOTO XB MODE SELECTOR KEYS, YOU CAN DECIDE WHAT STYLE YOU'D LIKE FOR YOUR DAYTIME RUNNING LIGHT AND TURN SIGNAL. CHOOSE FROM THE COLORCODED KEYS SHOWN BELOW FOR YOUR DESIRED STYLE

			
<ul style="list-style-type: none"><li>• DRL: WHITE</li><li>• TURN SIGNAL: FADE-OFF</li></ul>	<ul style="list-style-type: none"><li>• DRL: WHITE</li><li>• TURN SIGNAL: SEQUENTIAL</li></ul>	<ul style="list-style-type: none"><li>• DRL: AMBER</li><li>• TURN SIGNAL: FADE-OFF</li></ul>	<ul style="list-style-type: none"><li>• DRL: AMBER</li><li>• TURN SIGNAL: SEQUENTIAL</li></ul>

19. ONCE YOU'VE SELECTED YOUR DESIRED MODE, INSTALL THE SELECTOR KEYS ONTO THE TRIANGULAR 3-PIN CONNECTOR ON EACH OF THE HEADLIGHTS' WIRING, SHOWN BELOW



# HEADLIGHT INSTALLATION

20. SLIDE THE NEW HEADLIGHT INTO THE HEADLIGHT CAVITY



21. REINSTALL THE FIVE BOLTS AND BUMPER BRACKET TO SECURE THE HEADLIGHT IN PLACE
22. PLUG THE MAIN HEADLIGHT CONNECTOR PLUG INTO THE HEADLIGHT AND LOCK THE RED TAB ON THE CONNECTOR
23. REPEAT STEPS 20-22 ON THE OPPOSITE SIDE OF THE CAR
24. GET IN THE CAR AND CONFIRM THAT ALL FUNCTIONS ARE WORKING PROPERLY
25. REASSEMBLE THE FRONT OF THE CAR IN THE REVERSE ORDER YOU REMOVED IT

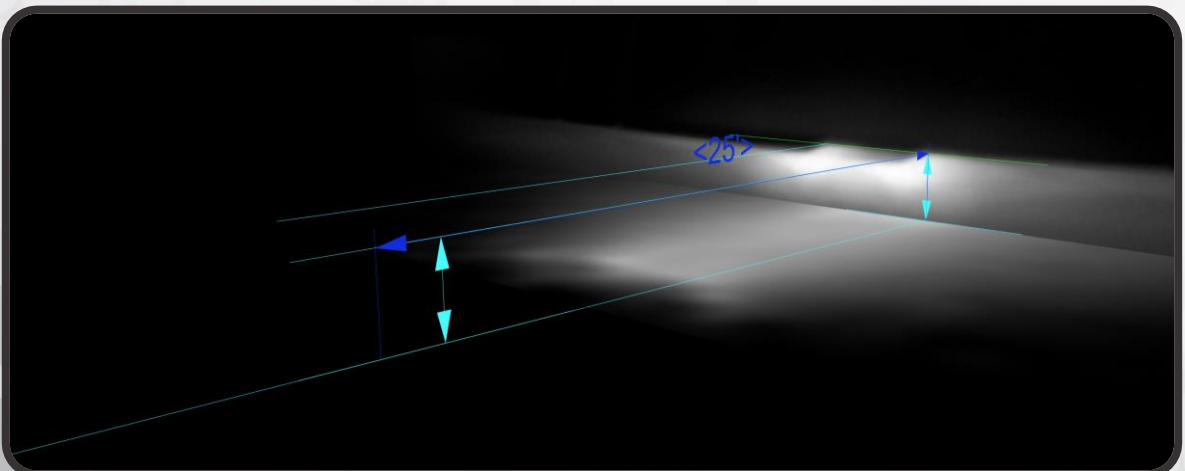


## AIMING

26. USING A PHILLIPS HEAD SCREWDRIVER, INSERT THE SCREWDRIVER THROUGH THE ACCESS HOLE ON THE INNER EDGE OF THE FENDER TO THE ADJUSTER GEAR AND FOLLOW THE INSTRUCTIONS BELOW TO PROPERLY ALIGN YOUR HEADLIGHTS' LOW BEAM CUTOFF (THE UPPER HORIZONTAL EDGE OF THE LOW BEAM)



27. WITH THE VEHICLE PARKED ON LEVEL GROUND, 25' FROM A WALL, MEASURE THE DISTANCE FROM THE GROUND TO THE CENTER OF THE HEADLIGHT'S LOW/HIGH BEAM PROJECTOR
- IF THE DISTANCE FROM THE GROUND TO THE OPTICAL CENTER IS LESS THAN 34.5", ADJUST THE TOP OF THE HEADLIGHT CUTOFF TO THE SAME HEIGHT AS THE HEADLIGHT MEASUREMENT YOU TOOK
  - IF THE HEIGHT IS BETWEEN 35"-39", ADJUST THE CUTOFF TO 2" BELOW YOUR HEADLIGHT MEASUREMENT
  - IF THE HEIGHT IS GREATER THAN 39.5", ADJUST THE CUTOFF TO 3" BELOW YOUR HEADLIGHT MEASUREMENT



# C7 CORVETTE XB HEADLIGHTS



- ENJOY YOUR NEW MORIMOTO XB HEADLIGHTS! -

