



BRIGHT IS ONLY THE BEGINNING

INSTALL GUIDE

DITCH LIGHT BRACKETS: 15+ COLORADO / CANYON

BAF075



WARNING: By reading this document, you agree it is only to be used as an educational guide. Morimoto Lighting nor its dealers make guarantees on any finished results, nor are they to be held responsible for any damage, misuse, or personal injuries. If you are unable to clearly understand and adapt the information below, professional installation is recommended.

WARNING: It is the installer's responsibility to confirm compliance with state and local laws.



DITCH LIGHT BRACKETS: 15+ COLORADO / CANYON

TABLE OF CONTENTS

PAGE

- BRACKET INSTALLATION
- WIRING NOTES

3
5

WHAT'S INCLUDED



2X DITCH LIGHT BRACKETS



2X WIRE CLIPS



REQUIRED TOOLS

- T30 TORX BIT / DRIVER
- 13MM SOCKET / WRENCH
- 17MM SOCKET / WRENCH
- PAINTERS TAPE
- PEN OR MARKER



BRACKET INSTALLATION

1

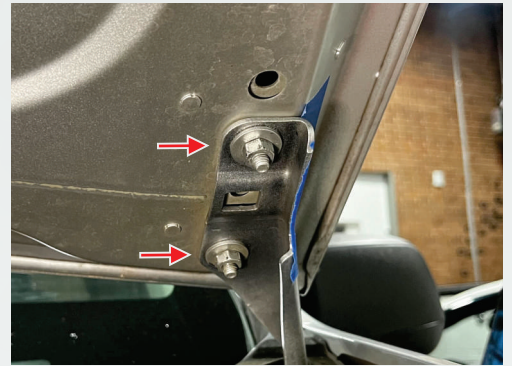
Open your truck's hood.

Using painter's tape, add two pieces of tape on the hood hinge and hood. Mark a line across them with a pen or marker. This will be used to match the hood alignment upon re-tightening.



2

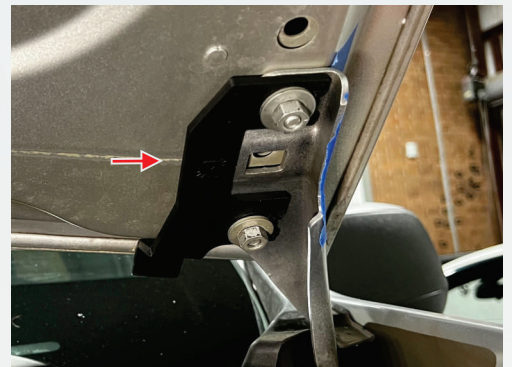
Using a 13mm socket or ratcheting wrench, loosen but **DO NOT REMOVE** the two nuts holding the hood to each hood bracket.



3

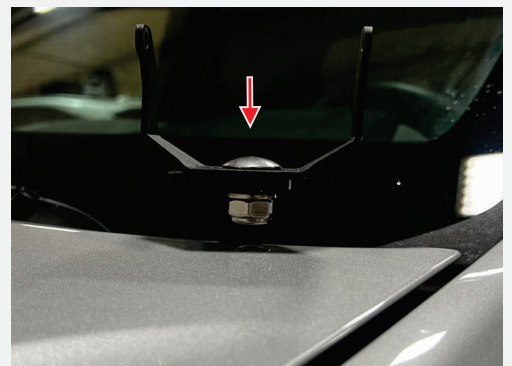
Slot the Morimoto Ditch Light Bracket between the hood hinge and the loosened nuts as shown. Tighten these nuts until snug, using the two pieces of tape as your alignment guide. Do not overtighten. Do not use power tools!

Note: there is one left bracket and one right bracket.



4

To install your Morimoto pod lights, close the hood and place the u-bracket on the top mount of the ditch light bracket. Secure it to the bracket using the carriage bolt and 17mm nut. Hold the top of the bolt down with your hand and tighten the nut with a 17mm wrench. Leave it slightly loose so that the pod can be aimed later.



5

Secure the pod to the u-bracket with the provided screws using a T30 torx bit. Leave these slightly loose as well to allow aiming later.



6

Install the included wire clips as shown.



7. Repeat this process on opposite side of vehicle.

-END OF SECTION-

PAGE 5: WIRING GUIDE



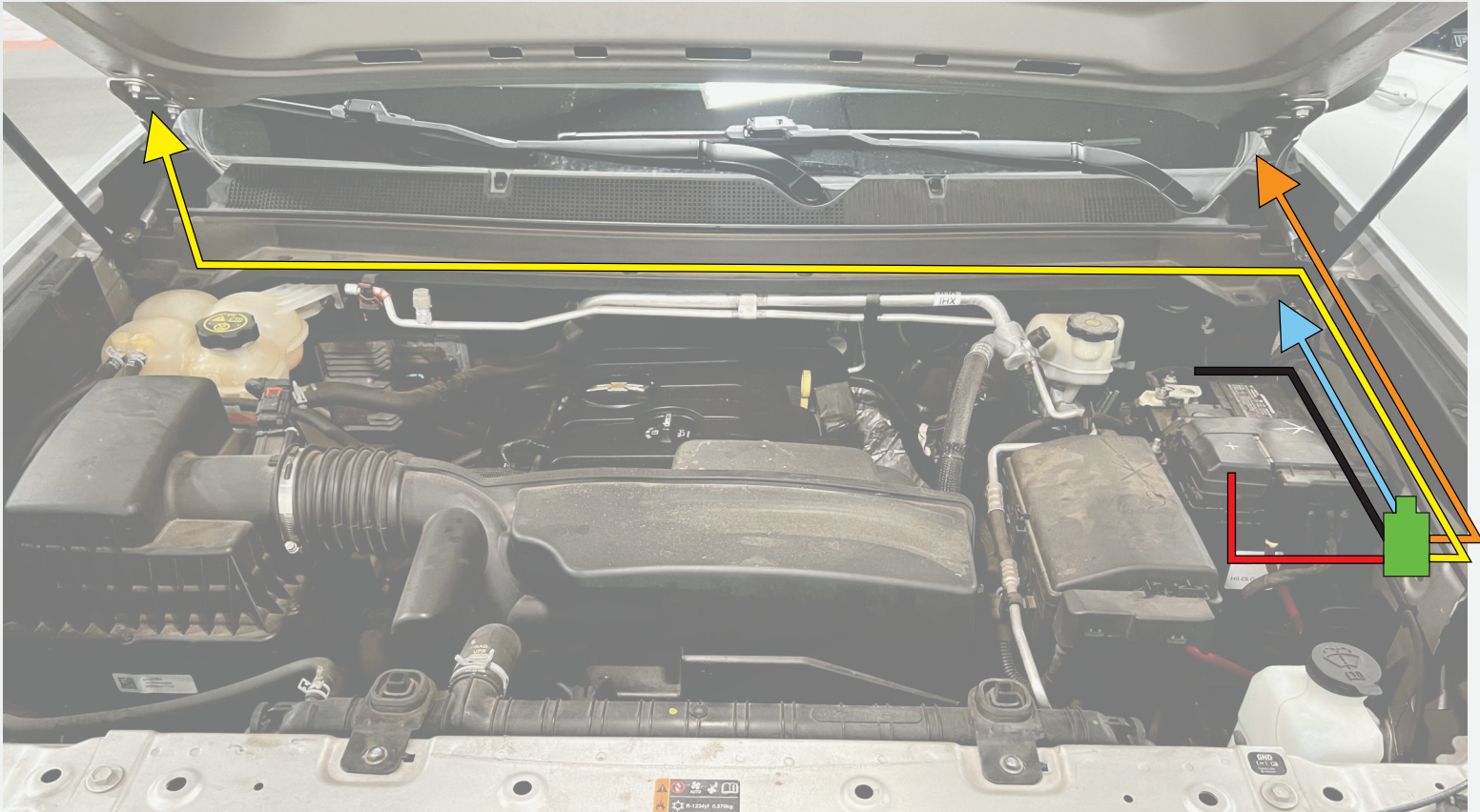
WIRING GUIDE

Install your relay power harness using the figure below as a guide.

- A. Mount your relay upright near the vehicle's battery (green in figure)
- B. Connect the red ring terminal labeled "Battery +" to the positive terminal on the battery (red in figure)
- C. Connect the black ring terminal labeled "Ground -" to a suitable bare-metal ground or the negative terminal on the battery (black in figure)
- D. Route the "Light 1" connector up to the nearest pod light (orange in figure)
- E. Route the "Light 2" connector across the firewall to the opposite pod light. The extensions included with your harness may be required (yellow in figure)
- F. The input wire (blue in figure) can be used in one of two ways:
 1. The bare wire input adapter can be used to wire any suitable switch of your choice, or as a trigger from the high beam circuit.
 2. Install the push button switch that was included with the harness. Locate a suitable grommet on the firewall to pass through to the interior footwell. Pass the switch harness through the grommet. Drill a 3/4" hole in your dash in the desired location and mount the switch.

Once all of your wires are routed, be sure to secure all wiring out of the way of anything that moves or generates excessive heat such as fans, belts, wiper arms, or exhaust components.

Test light functions, set aim, and tighten Torx T30 screws until snug. Do not overtighten. Do not use power tools.



-END-

